

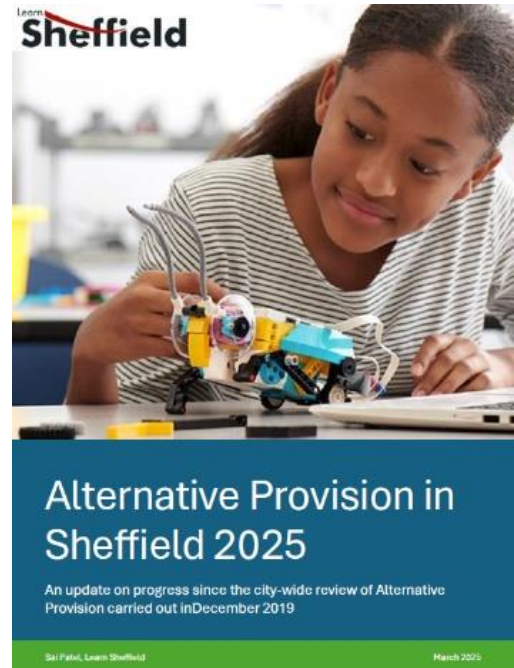
This partnership note provides a Learn Sheffield update for sector partnerships and locality meetings.

- **Alternative Provision Taskforce**

As we mentioned last time, we published [Alternative Provision in Sheffield 2025](#) in March. This report was commissioned by SCC to inform the development of AP strategy in the city and revisited and updated the report that we produced in 2019.

This work has been led by Sai Patel and will be followed up this half term by a series of targeted conversations and discussions in partnership meetings. We will then hold three taskforce meetings with colleagues who would like to get involved in the development of AP in Sheffield – see proposed current dates for meetings at Albion House:

- Thursday 22 May (1:30-3:30pm)
- Wednesday 11 June (1:30-3:30pm)
- Wednesday 10 July (9-11am)

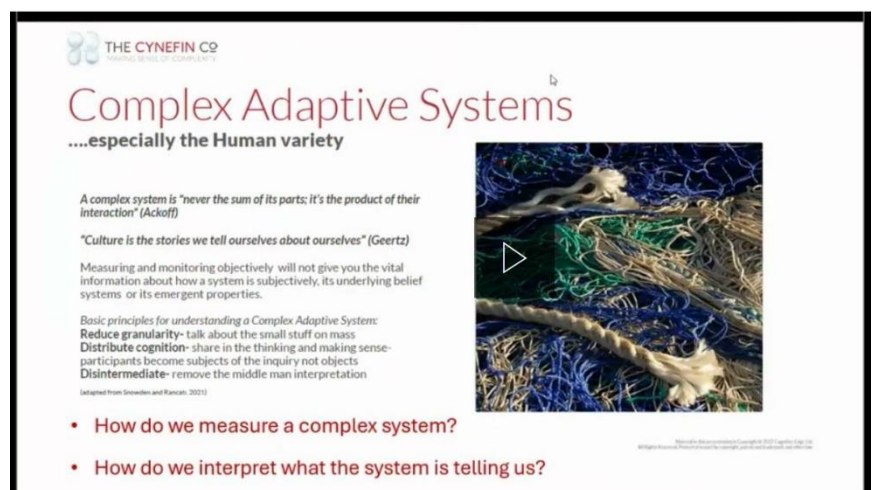


- **SenseMaker – First Pilot**

Learn Sheffield is working with [The Cynefin Co.](#) to trial new ways of collecting data about what it's like to grow up in Sheffield. This work developed from our school 'report card' project where we were exploring ways of gathering a diverse range of stakeholder views on a school. In January 2024, we held a workshop with Professor Dave Snowden to explore the SenseMaker approach. This session is available to view here: [Sensemaker Briefing January 2024](#).

The project is being funded by a Public Health grant and will initially run until September 2026. The recorded briefing (link in the image on the right) gives an introduction to the project and is suitable for settings who are interested in taking part.

Further information, including links to the collectors, is available here: [SenseMaker Project Page](#)



- **SEND Manifesto Update**

The SEND Manifesto commission continues to be a focus. This currently includes the SEND Enquiry activity that was postponed due to the Local Area SENDAP Inspection. This has now been rescoped to provide an opportunity to focus more specifically on issues that arose in the inspection.

Work on the building block projects (including Healthy Child Development and re-engineering the graduated approach) continues. The next phase of the commission is to develop a new SEND and Inclusion Strategy based on the manifesto. The scope of this will go to the senior leader group before half term and then more widely later in the summer.

**The new SEND strategy will be the focus of our Leader Conference on Friday 4 July** (at Niagara) and a festival programme (7-18 July) of additional sessions (online and in person) over the following two weeks. More detailed information will follow, so that the manifesto and the programme matches the new strategy but we would encourage colleagues to book their place at the conference in advance: [Book here](#)



- **Poverty Truth Commission**

The Poverty Truth Commission is now established and under way, with civic and community commissioners now working on the three areas that have been identified to focus on:

- Early years, children and young people
- Mental health
- System challenges

The Early years, children and young people group (which includes Stephen Betts) is planning to carry out some enquiry work to inform its decision making and will be asking for a small number of settings to help by facilitating a session with families and/or young people.

- **SAFE Taskforce Extension**

We were delighted to hear that the [SAFE Taskforce](#) project funding has been extended by the DfE. The three-year project was due to end of 31 March but will now run for an additional year. We are exploring ways to make this additional year run through 2025/26 to finish in July 2026 rather than March 2026. The funding is for 70% of the final year and this equates to approximately £1m for Sheffield to support young people at risk of involvement in serious violence. We will share more once we have established the scope of this additional activity!

- **Partnership Review**

We have asked Bev Nicholson from the LSIP team and David Light (who some of you will remember from his work at the National College) to collaborate on a piece of work to explore partnerships in the city. We asked about this as part of the [questionnaires](#) that we used in our [Independent Evaluation](#) (published February 2024) and said that we would come back to consider this in more detail later.

We don't have any preconceived ideas but feel that it is the right time to collect views from across the sector and locality partnerships, so that we can inform a discussion about how we might approach this in the years ahead. Look out for emails and do get in touch if you have views to share!

- **Learn Sheffield Subscription 2025/26**

Work is well underway on the new subscription offer for 2025/26. We expect to share this with our member settings before half term. Deployment conversations will begin immediately and run through to the end of the summer term. Contact [thomas.edmonds@learnsheffield.co.uk](mailto:thomas.edmonds@learnsheffield.co.uk) if you would like to book your meeting now.

- **Learn Sheffield Communications**

The most recent communications are below:

- Summary of training: [Summer Training Sway](#)
- Opportunities Bulletin: [April Opportunities Bulletin](#)
- Leader Briefing: [Summer 1 Leader Briefing](#)

The Learn Sheffield website contains all of our most recent communications, including the quick links (below) on the homepage: [www.learnsheffield.co.uk](http://www.learnsheffield.co.uk) to some of the above and our recent publications.

