

# Learn Sheffield Opportunities

December 2019

*The purpose of this bulletin is to share opportunities that school leaders may wish to take advantage of. It generally consists of free events, group discounts or local/national initiatives that are being offered to Sheffield. If you know of anything that you think should be included then let us know.*



Primary

## PESSPA Toolkit Launched!

The PESSPA (PE, school sport and physical activity) Alliance is a strategic group that brings together key partners from across the city. This includes Learn Sheffield, the Primary PE Alliance (which includes school leaders from each primary locality), Move More, the School Sports Partnerships of the city, Sheffield City Council, Sheffield Hallam University and a range of other organisations.



The Alliance has developed the PESSPA Toolkit which can be found here ...

<https://www.learnsheffield.co.uk/Partners/PESSPA/>. The toolkit includes guidance on PE, school sport and physical activity and builds upon the PE Pledge that was developed two years ago. The new pledges statements are accompanied by an audit tool to support schools in evaluating their provision and planning their next steps.

The next step for the PESSPA Alliance is to develop support for schools and to do this they would like your help. The google form below enables a school to record how it has assessed itself using the audit tool. This information will be used by the PESSPA Alliance to inform our next steps and try to ensure that whatever we are doing is supportive of the development needs of the city. It would be great if every Sheffield primary school could complete this as part of their engagement with the tool over the next couple of months.

For the PESSPA toolkit self-assessment , please follow the link below:

[https://docs.google.com/forms/d/e/1FAIpQLSf1OnFf2lctD9R1AD9l0PjsPbIXzxNf79DYwAACiauQjwwuA/viewform?usp=sf\\_link](https://docs.google.com/forms/d/e/1FAIpQLSf1OnFf2lctD9R1AD9l0PjsPbIXzxNf79DYwAACiauQjwwuA/viewform?usp=sf_link)

## County lines awareness session for schools



South Yorkshire  
**POLICE**

Sheffield  
City Council



Quaker Meeting House | 10 St James Street | Sheffield S1 2EW |

Tuesday, 3 December 2019 from 10:30 to 12:30

Secondary

Session to be delivered by DI Andy Farrell from the Regional Organised Crime Unit

Criminal exploitation is also known as 'county lines' and is when gangs and organised crime networks exploit children to sell drugs.

Aims and objectives:

- Explain what County lines are and the extent they are affecting local forces, regionally and nationally
- Raise awareness and increase knowledge around County lines.
- Understand that the response to county lines is a shared responsibility – Multi agency approach required.
- Provide guidance which will assist in identifying some of the key indicators of county lines.

Bookings via Eventbrite:

<https://www.eventbrite.co.uk/e/county-lines-awareness-session-tickets-78140649787>

Due to capacity, we ask that a maximum of 2 staff members per setting attend.

Primary

Special

Secondary



**The Sheffield Theatres Schools  
Newsletter for Autumn 2019 is  
available now!**

Sheffield Theatres Learning department supports in the delivery of a broad and balanced curriculum through engagement and creativity, delivering exciting workshops, projects and opportunities. Their work enables participants to understand more of the organization and how theatre is made as well to develop their passion and skill within the arts.

We're really excited to share this all their upcoming opportunities with you, and there's a lot coming up!

If you would like to access this newsletter,  
or have any further questions or want to  
know more, then email

[learning@sheffieldtheatres.co.uk](mailto:learning@sheffieldtheatres.co.uk).

**WORKSHOPS**

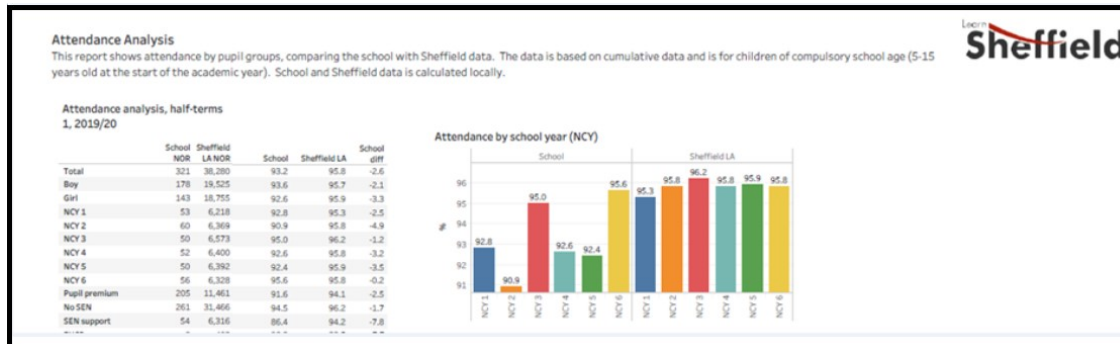
**PERFORMANCES**

**EXPERIENCE**

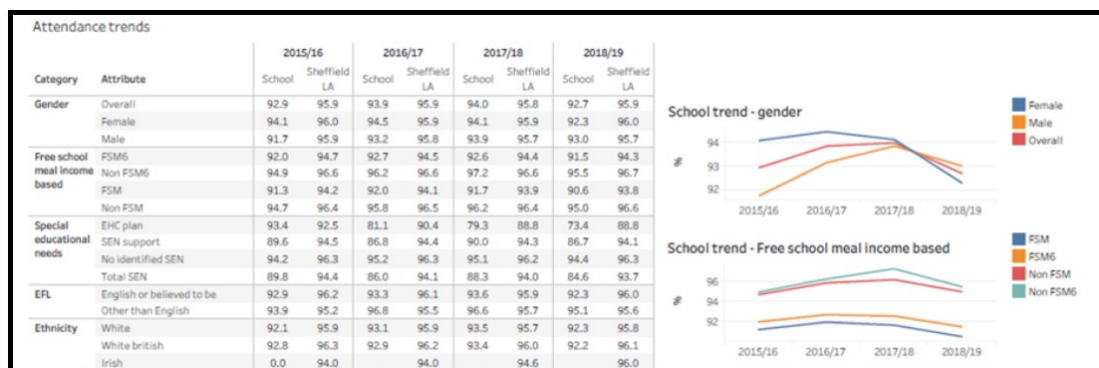
Have you signed into your account on the Sheffield Schools' Data Hub?

## Attendance and Exclusion Reports

Look out for the NEW LOOK attendance reports for half term one and the updated exclusion reports in the 'Schools' area of the Sheffield Schools' Data Hub - **exclusively** available to all subscribing schools.



These reports cover areas of attendance, absence and persistent absence at school, locality, Sheffield and national level. There are reports that drill down into the data to highlight attendance by pupil characteristics, as well as 4-year trend data to show the bigger picture and add more context.



We welcome any feedback or comments on how you are finding these reports (Please note some reports are only available to subscribing schools)

## Primary Attainment Packs

Updated primary attainment packs are due to be refreshed from mid-December following the release of Key Stage 2 data by the DfE.

Look out for your updated school attainment packs in your school area of the website.

**Remember to set up alerts to be notified of any report updates**

Contact us via email on: [schoolsdata@learnsheffield.co.uk](mailto:schoolsdata@learnsheffield.co.uk)

Telephone: 0114 203 9672 for more information.

Autumn Term 2019

Primary  
Special  
Secondary

NHS Sheffield Clinical Commissioning Group (CCG) is currently reviewing community therapy services including children's speech and language therapy and physiotherapy and occupational therapy. They are keen to gather views and feedback from children, young people, families and professionals. We want to consider improvements to the services to ensure people secure the support that meets their needs.

If you want to share your views please complete our survey on the links below;

For speech and language therapy comments please use;

<https://www.surveymonkey.co.uk/r/R7K2JBV>

For physiotherapy and occupational therapy comments please use

<https://www.surveymonkey.co.uk/r/R93JMRJ>

We are currently reviewing the community therapy services provided by Sheffield Children's Hospital at schools, clinics and Ryegate Centre and we would like to know:

- What's currently working well?
- What could be improved?

Primary

Special

Secondary

## Have your say on the draft Inclusion Strategy



Sheffield City Council, NHS Sheffield Clinical Commissioning Group and Sheffield's Parent Carer Forum have worked together to draft an inclusion strategy. It explains how we, as a city, improve in meeting the needs of our children and young people with special educational needs and/or disabilities (SEND).

Primary

Secondary

Special

Developing this strategy involved:

- co-production sessions in October (over 60 people attended)
- the views of young people taking part in discussion groups
- a strategy survey
- the Parent Carer Forum's State of Sheffield survey (over 700 responses)

The strategy will run for five years and set the priorities for how Sheffield supports its children and young people with additional needs.

The survey runs until to 8 December 2019. We'd like you to let us know what you think of our strategy, the support that's currently available and how you think it could be improved.

Get involved and find out more at: <http://www.sheffield.gov.uk/home/schools-childcare/inclusion-consultation.html>.

The Showroom Cinema has teamed up with the British Film Institute (BFI) to bring their hugely popular curriculum-led study days programme to South Yorkshire, using film to help engage students and promote deeper learning. They take place on weekdays, between **10.30am –3.30pm**.



Find Out More

Le Cinéma Français: Contemporary Dramas and the Nouvelle Vague for A Level French Students, Friday 29th November 2019, 10.30-3.30pm



Find Out More

Almodóvar on the Edge - All About His Films: A Study Day for A Level Spanish Students, Tuesday 21st January 2020, 10.30-3.30pm



Find Out More

¡Viva el cine en español! A GCSE Spanish Study Day, Wednesday 22nd April 2020, 10.30-3.30pm



Find Out More

French Film Approaches: A GCSE Study Day, Thursday 23rd April 2020, 10.30-3.30pm

## Pricing

£10 per student; £1 for accompanying adults (per 5 pupils, otherwise £10).

Places for teachers attending without students are £40.

**Before booking, please call 0114 279 6511 and ask to speak to Linnea (the Young Audiences Coordinator) to check availability, or email [linnea.pettersson@srws.org.uk](mailto:linnea.pettersson@srws.org.uk)**

Payment can be made online, over the phone or by post. Your places are not confirmed until payment has been received.

### ONLINE:

You can pay through the link on each study day page, but please get in touch with Linnea first to confirm there are places available.

### By PHONE:

Call 0114 279 6511 and ask for Linnea, who will go through the booking form with you over the phone.  
Monday - Friday, 9 - 17:30.  
Credit/debit cards only.

### By POST:

Please let us know at time of booking if you wish to pay by post. Download, complete and return the booking form (found on each study day web page, or can be emailed to you) and attach a cheque/card details to:

Young Audiences Coordinator  
Showroom Workstation  
15 Paternoster Row  
Sheffield  
S1 2BX

# Teach Sustainable Development Goals, Skills and Values with Lyfta

There are limited places available on this high-quality FREE course.

## What does the course entail?

The course helps teachers interested in global citizenship to look at how they weave it into their curriculum intent, implementation and impact, and includes:

- A 2-hour CPD session via an online webinar\* with teachers from around the country
- Free access to Lyfta's spectacular immersive storyworlds, example lesson and 25 assembly plans
- Support with planning/delivery of at least one lesson or assembly using the platform & resources
- An online review session to share practice and a short feedback assignment exploring impact

Upon completion of the course each participant will receive a British Council Level 2 CPD certificate.

## Who is it for?

Teachers, leaders and support staff from state-funded primary, secondary and special schools. The course supports colleagues in particular with teaching Literacy, PSHE, Citizenship, SMSC, Geography, R.E, Art, Sustainable Development Goals.

## How much does it cost?

There is **no cost to this course**, but places are limited. All participants are eligible to subscribe to [Lyfta](#) at a discounted rate.



## How do teachers book onto the course?

To book a place, teachers go to <https://www.lyfta.com/ccgl>



Primary

Special

Secondary

## Data Protection Update Workshop & Gap Analysis

Come along to the Data Protection Workshop for the latest on ICO updates, ongoing gap analysis and subject access request management.

Data management and adhering to GDPR regulations is an ongoing process as the goal posts are evolving as cases appear and Brexit negotiations continue. However there are ways in which we can continuously work towards compliance with the legislation.

To do this we need to plug the gaps and identify the areas where we aren't quite there and assess the level of risk associated.

GAP analysis is key to this, picking out precise areas of concern and addressing them.

**Date:** 16 January 2020

**Course:** 9.30am- 12noon

**Costs:** FREE to school leaders

**Venue:** Learn Sheffield,  
Lees Hall Road, Sheffield S8 9JP

Learn  
**Sheffield**  
By Sheffield. For Sheffield. In collaboration

## For more information and to book onto the courses:

Phone: 01924 827869

Email: [training@fusionbusiness.org.uk](mailto:training@fusionbusiness.org.uk)

Online: [www.fusionbusiness.org.uk](http://www.fusionbusiness.org.uk)

# SEND REVIEWER TRAINING

Primary

Secondary

Special

TUESDAY 3<sup>RD</sup> DECEMBER 2019 (9.30 – 2.30 PM)

AT

HILTON HOTEL, YORK



A coalition of more than 4000 schools, practitioners, charitable organisations, parents and young people

Committed to improving outcomes for learners with SEND, by networking, collaborating and sharing what works.

Whole School SEND is part funded by the Department for Education to deliver the School's Workforce contract for 2018/9 and 2019/20

## SEND Reviewer Training will support you to:

- Be familiar with the SEND Review Framework.
- Develop practical strategies so you can evaluate SEND provision through Peer Review, and build a Community of Practice
- Develop your coaching skills so you can lead supported and sometimes difficult conversations.

## This is NOT an inspection or done-to process

- Focus on self-evaluation, supported by a lead with expertise
- Practitioner-led process, develop through collaboration.



## Whole School SEND Review:

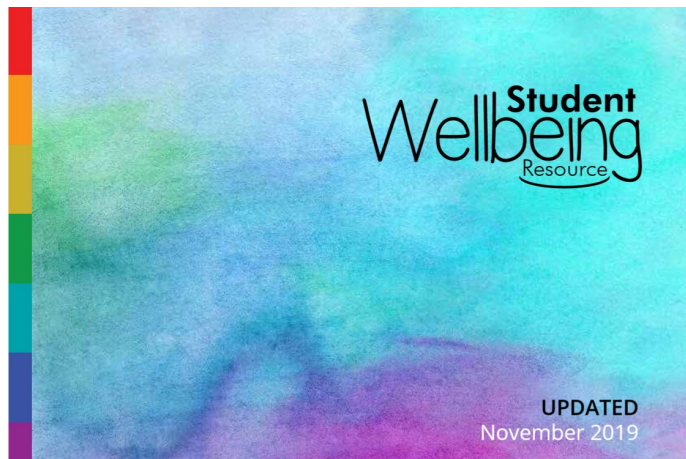
- One of the Whole School SEND Programmes to raise standards for SEN through bespoke support:
- System Leads review provision, share strengths and support the development of recommendations
- Can be a tool for SEND leads to self-evaluate, peer review and encourage collaboration and build communities of practice.
- Can link to programmes of ongoing support to develop strategic capacity, around an agreed 'Vision'.

## Why undertake a whole School SEND Review?

- ✓ Raising attainment and improving progress.
- ✓ Improving the quality of provision for pupils with SEND.
- ✓ To support effective implementation of the SEND reforms.
- ✓ Reviewing the quality of inclusive practice at a school.
- ✓ Increasing attendance and reducing exclusions for pupils with SEND.
- ✓ Gaining a better understanding of the well-being for pupils with additional needs.
- ✓ Wanting a fresh perspective on provision from an experienced system leader.
- ✓ Significant change in the demographic of the SEND population in the school.
- ✓ A change in leadership and management at the school.
- ✓ External validation of a school's evaluation of its SEND provision.

**"Some of the best CPD I've had as an Executive Head"** (Headteacher, Sheffield)

To book onto this training please email Judith Smith at [RSL.EMSYH@wholeschoolsend.com](mailto:RSL.EMSYH@wholeschoolsend.com).  
Hurry, places are filling up quickly!



The Student Wellbeing Resource has been updated with new information and sections to help schools to meet the needs of vulnerable pupils. The resource was developed by Learn Sheffield, Sheffield City Council and provides information about a range of barriers that children and young people may face.

Learn Sheffield, Sheffield City Council and a range of providers come together in 2016 and 2017 to develop the Student Wellbeing Resource - and it has now been updated.

The resource is divided into sections which address the variety of ways in which a child or young person could be vulnerable. Each section provides an overview of the barriers, some best practice advice, and links to available resources and local provision.

You can access the full resource here: <https://www.learnsheffield.co.uk/Downloads>

Alternatively you can access the resource and individual sections by visiting the Resources page on our website. It can be found as a tab in the middle of our homepage or here <https://www.learnsheffield.co.uk/Resources/student-wellbeing-resource>.

Primary

Special

Secondary

## Hallam Festival of Education 2020

Friday 12<sup>th</sup> June 2020

**Hold the date!**

**Sheffield  
Hallam  
University**

Sheffield  
Institute  
of Education

Sheffield Hallam University are delighted to tell you that they are currently organising their second Hallam Festival of Education - "20:20 Vision for Education". They'll be celebrating the 150<sup>th</sup> anniversary of the Forster Education Act and looking forward to the next 10 years, discussing and showcasing how our school system is responding to the current and emerging challenges.

We are busy developing ideas to make this as successful as our first festival and will be keeping you in touch as our planning progresses – but in the meantime, please do hold the date in your diary.

**Sheffield  
Hallam  
University**

Primary

Special

Secondary



## Eat Smart Sheffield Briefing

Wednesday 4<sup>th</sup> December 2019

From 4.30pm – 5.30pm



### Learn Sheffield Training & Development Hub

Primary

Special

Secondary

If you're interested to learn more about the Eat Smart Sheffield programme, please come along to this informal briefing session.

Focusing on a whole school and settings approach to food and nutrition, the programme aims to provide tools for changes to food culture and the curriculum, as well as ways to improve confidence, skills, knowledge and understanding of food and healthy behaviours.

This one hour session will provide an overview of the programme and look at what Eat Smart Sheffield can offer your school.

[Book Now](#)

For more information contact **Lisa Aldwinckle** on  
0114 250 7417 or email:  
[eatsmartsheffield@learnsheffield.co.uk](mailto:eatsmartsheffield@learnsheffield.co.uk)

## Eat Smart Sheffield Conference

Thursday 21<sup>th</sup> May 2020, 9am-3.30pm  
Sheffield Hallam University

Primary

Secondary

Special



**Save the date** for our first Eat Smart Sheffield Conference - showcasing some of the excellent work that has been achieved since our launch in September 2019 plus the latest healthy food related initiatives, research and good practice.

With a focus on a whole school and settings approach to food and nutrition, this is open to anyone working with children, families and the wider community who have an interest in their health and wellbeing, including Head Teachers, teaching staff, school and health specialists, and public health team members.



Keynote Speaker- **Greg Fell**

Director of Public Health, Sheffield City Council

Greg graduated from Nottingham University with a degree in Biochemistry & Physiology in 1993. Since then, he has worked in a number of roles in Health Promotion and Public Health before joining the Public Health Training Scheme. Greg then worked as a consultant in Public Health in the PCT, Bradford, then Bradford City Council. Since February 2016 he has worked for Sheffield City Council as the Director of Public Health.



During 2019/20 we are offering **frontline staff who work with teenagers** a number of training opportunities as part of the statutory Prevent duty. The training courses are designed to help staff support young people who might be vulnerable to being drawn into terrorism and extremism.

The Home Office funded projects are delivered by organisations that have a track record of delivery across the UK and have experience of working across all forms of extremism and terrorism.

Staff Training Session	Audience	Description	Date/Time	Booking process
<b>Holding Difficult Conversations - Responding to Hate &amp; Division</b> (Delivered by the Tim Parry Johnathan Ball Peace Foundation)	Frontline, teaching, safeguarding and pastoral staff	The training will cover: <ul style="list-style-type: none"> <li>• Awareness of the signs of vulnerability to radicalisation and what to do about them.</li> <li>• Understanding of the triggers of extreme attitudes and behaviour and responses to them.</li> <li>• Managing unexpected conversations or incidents of challenging or concerning behaviour</li> <li>• How to open a dialogue challenging prejudice constructively without shutting sensitive discussions down</li> </ul>	Date: Wednesday 26th February 2020 Time: 9am-4pm Location: House, St James Street, Sheffield	<a href="https://www.eventbrite.co.uk/">https://www.eventbrite.co.uk/</a>
<b>Combined Awareness &amp; counter-narrative for practitioners</b> (Delivered by Small Steps)	Frontline, teaching, safeguarding and pastoral staff	The training will cover: <ul style="list-style-type: none"> <li>• The dangers of involvement in far-right extremism and radicalisation.</li> <li>• Grievances manipulated by the far right.</li> <li>• A breakdown of local and national groups.</li> <li>• Recruitment techniques, counter-narratives and how to recognise and support vulnerable individuals.</li> </ul>	Date: Monday 13th January 2020 Time: 10am-12pm Location: Town Hall, Sheffield  Date: Thursday 13th February 2020 Time: 1pm-3pm Location: Vestry Hall, Sheffield	To book onto either course, email <a href="mailto:el-lie.grant@sheffield.gov.uk">el-lie.grant@sheffield.gov.uk</a>
<b>My Former Life Train the Trainer</b> (Delivered by the Tim Parry Johnathan Ball Peace Foundation)	Frontline, teaching, safeguarding and pastoral staff	My former life is a multimedia education resource based on a documentary about four former extremists. The film and accompanying teaching resources explore the formers' personal and political motivations for getting involved in violent conflict, the consequences of their actions, and their departure from a life of extremism.  The train the trainer session covers:  An introduction to resources and the approach  Best practices for the delivery of the film and resources and a run through of exercises and activities;  Safeguarding issues and answering difficult questions.	Date: Tuesday 28th January 2020 Time: 9am-4pm Location: Quaker Meeting House, St James Street, Sheffield	<a href="https://www.eventbrite.co.uk/">https://www.eventbrite.co.uk/</a>

# Using Lesson Study

to develop Curriculum Coherence in Mathematics

Primary

Secondary



Collaborative  
Lesson Research  
Teachers as learners

9th & 10th December 2019

Led by Dr. Akihiko Takahashi

**Dr. Akihiko Takahashi is one of the leading authorities of Japanese Lesson Study both within Japan and globally.**

He has been active in introducing Lesson Study in America in the past 20 years, and has recently led a flagship project funded by the Gates Foundation to introduce Lesson Study for curricular reforms in the USA.

He returns to the UK to provide insight about how the Japanese Lesson Study can help develop teaching practice and curricular coherence. He has published over 45 journal articles and book chapters and given over 50 presentations and keynotes at conferences and workshops in Canada, Chile, Indonesia, Japan, Korea, Malawi, Malaysia, Mexico, Philippine, Qatar, Singapore, Thailand, Uganda, United Kingdom, and United States.

9 December 2019

**Japanese Problem Solving and Lesson Study**

This workshop is designed for schools, teachers and curriculum leaders who are new to Lesson Study. During the day participants will learn about the Japanese approach to teaching mathematics through problem solving.

Book on: <https://www.eventbrite.co.uk/>

10 December 2019

**An introduction to 'Kyouzai Kenkyuu' the key component of lesson planning in Japan**

This workshop is designed for schools, teachers and curriculum leaders with experience of Lesson Study cycles and who now want to use Lesson Study to develop curriculum coherence within their mathematics curriculum.

Book on: <https://www.eventbrite.co.uk/>

The cost of one workshop is **£100 + vat per person.**

If you book both workshops (9th and 10th December) the cost for **both workshops is just £150 + vat.**



## Blood and Transplant

The letter below was sent out via email in November on behalf of Dr Simon Steel.

Primary

Secondary

Special

Attitudes in the UK are changing positively towards organ donation in the adult population but we have a long way to go in improving organ donation rates from children and young people, and in doing so help save the lives of thousands of people waiting for an organ transplant.

In the UK, consent rates for children's organ donation fall well below the national average for the adult population, with less than 50% of families agreeing to their child becoming an organ donor when approached at the end of their child's life.

In 2017/18 when there were over 1500 organ donors, only 39 organ donors were aged 16 years or younger. This is having a huge negative impact upon children in the UK waiting for a life saving organ transplant where the wait for a new heart for example, means waiting 2-3 times longer than an adult.

Legislative changes for organ donation in the UK will most likely have the greatest impact on donation from adults but in March 2019, NHS Blood & Transplant launched it's first ever children's strategy to try and help bridge the gap between the successes seen in adult organ donation in comparison to children.

By taking part in this anonymous survey, your answers will help our understanding of the challenges towards children donating their organs at the end of their lives, and help us to identify possible changes that we can make to improve this situation.

To take part in the survey, please use the following link—<https://www.surveymonkey.co.uk/r/D8FS36C>

BREARLEY  
BEAR AND THE

REINDEER  
ROUND-UP



NOVEMBER 23RD

— DECEMBER 24TH

Pick up your Red Nose Locator from Unit 1, Surrey Street  
(next to The Winter Garden).



Secondary

The Sheffield Adventure Film Festival is a well-established date on The Outdoor City's calendar. It takes place in March each year and attracts a large audience. But we want to expand both geographically, and also demographically. The festival draws a loyal crowd of parents with their primary school aged children, but we struggle to persuade teenagers to come along, so we have set up a publically funded scheme to pay for us to tour a selection of films from the festival to schools and other groups of teenage kids in the city and local area. There is no cost as it is funded by a generous group of Patrons who give a small monthly amount to support the project via a platform called Patreon (see <https://www.patreon.com/shaff>).

**If you're interested in having us come and present then just get in touch:**

[Emma.banks@sheffield.gov.uk](mailto:Emma.banks@sheffield.gov.uk) contact us now to get booked in.

We'd like to visit a school per month so get in touch quickly to avoid disappointment.

**School will need to provide:**

- A room with AV facilities and the ability to play a PowerPoint presentation with videos (which includes sound).
- Fill the room with as many secondary school pupils as possible!

## The Leadership Training Programme 2019/20

Primary

Special

Secondary



This new programme has been added to the Learn Sheffield Subscription Offer for 2019/20.

The sessions are aimed at new, aspiring and existing leaders. The training is designed to provide induction training for those who are new to school leadership or refresher training for more experienced colleagues.

The themes are co-designed with school leaders and focus on the practical aspects of leaders' roles. The programme will grow through the year as additional sessions are identified and added.

### Sheffield Education Landscape

This session attempts to map the fragmented education landscape to provide colleagues with a clearer understanding of the many partners with whom schools work. This will include Sheffield City Council and other public services.

**Date:** 2nd December

**Time:** 4.00-5.30pm

**Venue:** Learn Sheffield (Newfield site)

Or

**Date:** 5th December

**Time:** 8.30-10.00am

**Venue:** Learn Sheffield (Newfield site)

### Health & Safety

Managing health and safety well can bring many benefits to you, your staff and also the rest of the school community. It is important that you have clear arrangements in place for managing health and safety, and, as a Headteacher, understand your role, responsibilities and accountabilities. Getting health and safety leadership right is about managing risk sensibly. This short briefing session outlines your duties under health and safety legislation, the benefits of managing health and safety well; the potential consequences when it goes wrong and dispels some of the myths associated with "elf and safety gone mad..."

**Date:** 11th December

**Time:** 3.30-5.00pm

**Venue:** Learn Sheffield (Newfield site)

### School Admissions & Appeals

This session will cover the legal framework that governs schools admissions and appeals. We will also explain the role of the Local Authority in coordinating the admission and appeal procedures, responsibilities of Headteachers and the specific requirements for schools that are their own Admission Authority such as Academies and Aided Schools. This will be an informal interactive session and there will be plenty of opportunity for questions.

**Date:** 14th January

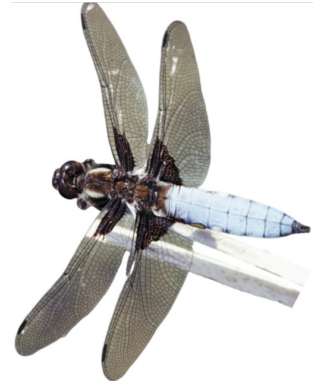
**Time:** 9.00-10.30am

**Venue:** Learn Sheffield (Newfield site)

For more information and to book places on the sessions visit - <http://www.learnsheffield.co.uk/Training-and-Events/Leadership-Training>.

# RSPB Old Moor

## Outdoor learning on our nature reserve



Each two hour outdoor workshop encourages working scientifically, active hands on learning and promotes health and wellbeing.

### Early Years & Key Stage 1

#### Brilliant birds

We'll explore the habitats where birds live and find out about communication, camouflage, nest building and what's on the menu for hungry baby birds!

#### Discovering land minibeasts

Using simple equipment we'll collect and identify a range of minibeasts in our grassland and woodland habitats through a variety of sampling techniques.

#### Discovering pond minibeasts

Using a variety of equipment we'll catch, observe, identify and begin to understand more about the hidden lives of aquatic minibeasts, fish and amphibians.

**Curriculum links:** Making observations, identifying similarities and differences. Animals, living things and habitats, classification.

---

#### Seasonal sensory walk

In this session we'll encourage children to not only look but listen for wildlife, touch and feel textures and smell the scents of the season to help them learn about nature through games and interactive activities.

**Curriculum links:** Share own preferences. Explore a variety of colours and textures. Talk about change when observing plants and animals.

#### Plant detectives [KS1]

On a journey around the reserve we'll find out what it takes to survive as a seed, discover some of the special plants and trees and look at how they differ depending on where they grow.

**Curriculum links:** Plants and seasonal changes. Making observations, asking and answering questions based on observations and ideas.

### Key Stage 2

#### Pond habitat study

An in-depth investigation into our freshwater ponds. Using simple equipment we'll catch and observe animals from different microhabitats within the pond and reason why they belong to each.

#### Investigating minibeasts

Using a variety of sampling methods in different habitats we'll take a closer look at the lives of minibeasts to investigate how they are suited to their environment.

**Curriculum links:** Plants, animals, classification. Food chains, lifecycles & adaptations. Gathering and recording data. Sharing findings.

---

#### Living things and their habitats

A closer look at our habitats and the plants and animals that live there and how they are adapted to suit their environment.

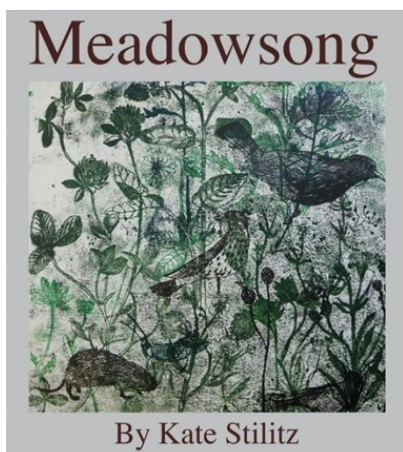
#### Discovering birds

In this session we'll find out about the birds that live in our woodland and wetland habitats. We'll learn about their adaptations through observation, games and interactive activities.

**Curriculum links:** Living things and habitats, adaptations. Plants, animals, classification. Evolution and inheritance.

**If you would like to discuss our education programme and book a school visit to our nature reserve please contact:**

catherine.clarke@rspb.org.uk  
01226 273 831



**Through the power of song and connected learning, we aim to give teachers the opportunity to support biodiversity in creative and active ways**

*"I think the children will find the music really inspiring and I'm going to use that to get them to think persuasively about how to take action and create wildflower gardens in our school"*

Teacher, Haringey 2019

### **Meadowsong project – [www.meadowsong.co.uk](http://www.meadowsong.co.uk)**

The RSPB and WWF are excited to inform you of a FREE national primary teacher training programme and resource package. Based around four songs, the Meadowsong programme offers children and the wider school community an opportunity to explore, discover and connect deeply with wildflower habitats and their wider environment through a combination of creative music, movement, visual arts, English, science curriculum-linked lessons and first-hand experiences of nature.

The project delivers a full day training workshop for Year 3 teachers to explore the use of 'Meadowsong' alongside the RSPB's Wild Challenge award scheme. The workshop outlines a flexible, cross-curricular programme that can be easily adapted to local needs and requirements and provide the necessary resources for teachers to deliver this independently.

In summary, we are offering:

- FREE Y3 teacher training – 30 places
- FREE resources for one half term in Science, Literacy, Art, Music and Dance
- FREE music resourcing including scores and backing tracks for an assembly performance
- FREE expertise and guidance on how to create and maintain a wildflower mini meadow.
- FREE licensing for every school of the Meadowsong music.

**DATE:** Monday 2<sup>nd</sup> March 2020

**LOCATION:** Learn Sheffield



**In order for this event to go ahead, we must have at least 30 participants, so book your place now!**

**BOOK NOW:** <https://www.eventbrite.co.uk/e/meadowsong-project-tickets-78020004935>

**For further information about the Meadowsong project please contact:**

**Telephone:** 07803577011

**Or Email:** [Meadowsong@rspb.org.uk](mailto:Meadowsong@rspb.org.uk)

A teacher training programme combining the arts and science, in partnership with:



# SHEFFIELD/GREATER SHEFFIELD SCHOOLS BOULDERING COMPETITION 2020

This annual competition is the highlight climbing event for all Sheffield schools and last year we had 601 children competing in total. Our competition is unique because it is not all about winning, for many, it is about participation, fun and experiencing a new activity. Most teams are made up of pupils that have very little or no previous climbing experience.

With our competition growing in popularity each year and with the recent introduction of Greater Sheffield schools, we strongly recommend registering your school and booking a qualification slot as soon as possible to avoid disappointment.

## QUALIFICATION ROUND

The qualification round takes 2 hours and is run at The Climbing Works by our instructors. Explanation of the competition format and a climbing practice will take place as part of the qualification round.

The qualification round will consist of 8 specifically set boulder problems. Points will be scored on how many of the 8 climbs get topped in the least amount of attempts.

Qualification sessions can be booked either during or after school hours at a time and date to suit the school and must be completed before the 14th Feb 2020.

**You can book your qualification round now!**

## FINALS

**Sheffield Schools** - The top 10 teams will be invited to compete in the Sheffield Schools Bouldering Competition Finals which will take place on Friday 20th March from 9.30am - 12.30pm. Schools will be informed by the 14th Feb if their team has made the finals.

**Greater Sheffield Schools** - The top 10 teams will be invited to compete in the Greater Sheffield Schools Bouldering Competition Finals which will take place on Thursday 19th March from 9.30am - 12.30pm. Schools will be informed by the 14th Feb if their team has made the finals.

## REGISTRATION

To enter a team for the 2020 **Sheffield or Greater Sheffield (Rotherham, Doncaster, Barnsley, Chesterfield or in The Peak District) Schools** Primary Bouldering competition please complete the registration form (follow the relevant link below) and submit by 15th January.

Teams must consist of 4 - 6 climbers and include both male and female competitors. The competitors must be in years 5 and/or 6 and don't need to be experienced climbers to take part.

**Registration** £10 per person (max 3 teams per school) .



## PRIMARY SCHOOLS

Book now!

## SECONDARY SCHOOLS

Book now!



# Free Prevent Training for Sheffield School Leaders

## (Suitable for Headteachers, Safeguarding Leads and Governors)

The DfE published 'The Prevent Duty: Departmental advice for schools and childcare providers' in 2015. It is essential that schools in all phases are aware of and understand their responsibilities under the statutory Prevent duty. This session will cover national and local Prevent perspectives, Safeguarding processes, resources available to schools, advice from Ofsted and will include 'Workshop to Raise Awareness of Prevent' training. This training replicates earlier sessions and is for NEW leaders only.

The next planned training session is  
scheduled for:

**Wednesday 5th February 2020**

**9.15-11.45am**

at Learn Sheffield, Lees Hall Road,  
Sheffield, S8 9JP

To book your place, email:

[bookings@learnsheffield.co.uk](mailto:bookings@learnsheffield.co.uk)



Department  
for Education