

Primary

Special

Secondary

# Learn Sheffield Opportunities

December 2017

*The purpose of this bulletin is to share opportunities that school leaders may wish to take advantage of. It generally consists of free events, group discounts or local/national initiatives that are being offered to Sheffield. If you know of anything that you think should be included then let us know.*

**This year the bulletin is aimed at all sectors – look out for the labels above to indicate who the opportunity is most likely to be of interest to!**

Primary

Secondary

Special

Briefing  
2 of 6

## The Programme Includes...

- **Key Note - RSC Update**  
(John Edwards – RSC for East Midlands and the Humber)
- **Key Note - A Guide to EEF Resources for Schools**  
(James Richardson - EEF, Alex Quigley & Jane Elsworth - Huntington Research School)
- **Learn Sheffield Update**

## Venue

**Sheffield Hallam University  
Pennine Lecture Theatre  
Owen Building, Level 2, Howard  
Street,  
Sheffield, S1 1WB**

## Key Note Speaker

**John Edwards**  
(RSC for East Midlands  
& the Humber)



John Edwards started his role in May 2017. Before his appointment, John was Director of Education and Skills at Manchester City Council. Earlier in his career he also worked as:

A mathematics teacher and senior leader in secondary schools in Yorkshire

A Principal Examiner for Mathematics

Service Director for Schools and Lifelong Learning at Wakefield Council

Assistant Director for Learning at Kirklees Council.

**Book Now**

## SAVE THE DATE

Wednesday 24 January – Spring 1 Leaders' Briefing—  
Venue TBC

# Sheffield Student Wellbeing Resource

Primary Secondary Special

The Sheffield Student Wellbeing Resource will be launched early in the autumn term of 2017. It will be available online (via the Learn Sheffield website) and in PDF form.

The resource has been developed by Learn Sheffield, Sheffield City Council and a range of providers to support schools to meet the needs of vulnerable pupils. It provides information about a range of barriers that children and young people may face.

Each section provides an overview of the barriers, some best practice advice, and links to available resources and local provision.

The Student Wellbeing Resource is now on the Learn Sheffield Website  
<http://www.learnsheffield.co.uk/Partnerships/Healthy-Minds?id=swr&pid=downloads>



## Student Wellbeing Index



- 3 Introduction
- 7 Bereavement
- 10 Body Image & Self-Esteem
- 13 Bullying
- 19 Children in Care and Care Leavers
- 22 Child Sexual Exploitation
- 27 Domestic Abuse
- 32 Eating Disorders
- 34 Female Genital Mutilation (FGM)
- 36 Forced Marriage
- 38 Gender Equality
- 41 Healthy Relationships
- 45 Honour Based Violence
- 47 Housing & Supported Accommodation
- 51 LGBT+ Young People
- 54 Menstruation
- 60 Mental Health
- 67 Online Safety
- 70 Prevent & Radicalisation
- 73 Sexual Abuse
- 76 Sexual Consent
- 79 Sexual Health
- 83 Substance Use/Misuse
- 87 Young Carers
- 90 Youth Crime

Click on a Page Title above to go directly to that page. All web links and email addresses are clickable.

*Celebrating and developing expertise  
in teaching and learning*

**Early Years and Primary Education Conference**

Wednesday 10 January 2018

Sponsored by



[shu.ac.uk/sioe](http://shu.ac.uk/sioe)



**Code for delegates:**

VIPFREE-free place for all head teachers and schools who have supported a trainee in the past year.

50OFF- half price delegate places for all NQTs and RQTs

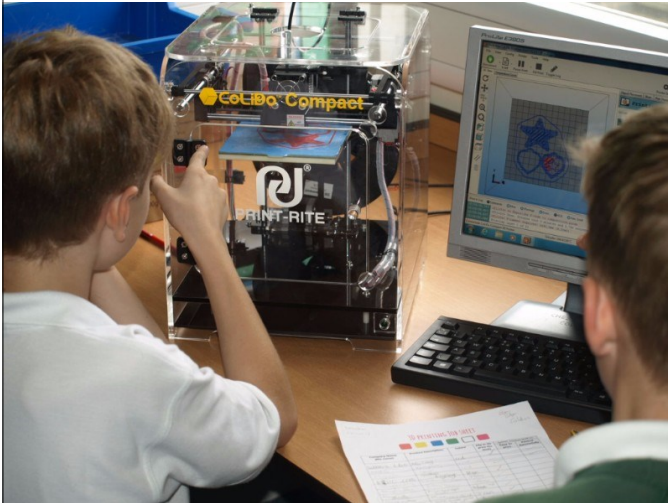
**Delegate fee £50**

**Programme for the day**

<b>Time</b>	<b>Session</b>	<b>Location</b>
8:30 - 9am	Registration and refreshments	TBC
9.15 - 10am	Welcome - Professor Samantha Twiselton Director of Sheffield Institute of Education Keynote - Dame Alison Peacock, Chartered College of Teaching	TBC
10-10.45am	Panel discussion	Lecture theatre
10.50 - 11:10am	Refreshments	
11.15 - 12.15pm	Workshop one - choose from a selection	
12.15-1pm	Lunch	
1.15 - 2.15pm	Workshop two - choose from a selection	
2.30 - 3.30 pm	Workshop three - choose from a selection	
3.30pm	Close	

# 3D Printing for Primary School Scheme

@ Sheffield Hallam University 5th December 2017



We have teamed up with the 3D Printer folk at Colido and the Institute of Education at Sheffield Hallam University to bring you an amazing new scheme for your primary school.

## *FREE Lesson Resources*

Access to a bank of lesson ideas and resources for Reception to Y6 designed by teachers for teachers.

## *Teacher Training & Coaching Plan*

During a full day CPD, you will get to grips with how your 3D printer works and how it can be used as a tool in the primary classroom.

We will follow this up with a 6 week coaching plan to help you intergrate it into school.

## *FREE 3D Pens!*

To say well done for becoming a Maker School, we will give you some 3D pens for your school! These are a great resource to use in lessons or as part of a Maker Club!

## *Maker Quality Mark*

Completion of the training and coaching plan will earn you a **Bronze Maker Quality Mark!**

We will then help you to access and integrate even more maker education into school to help you gain your silver and gold awards!

## *Plug & Print! Easy to use 3D printer*

Take a printer home from the training and we will help you to raise the funds to keep it!

If your school has less than 70 children on role you get the printer for FREE!

As well as all this, you also get a **Maker School Launch Pack** full of free goodies for every child, fundraising support and an assembly guide. Plus, free technical support from Colido.

We have tried to make this scheme as accessible to schools as possible, and squeeze in as many freebies as we can. The only cost to the school is for the 6 week training and coaching plan. This includes 1 full day training and 3 twilight coaching sessions for a total cost of £350.

**Next Training:**  
Sheffield Hallam University  
Tuesday 5th December 2017



**LTL Enterprise Challenge.** @LTLEnterprise  
f Louder Than Life

Primary Secondary

The 'Louder Than Life' Challenge is a full day enterprise programme.

Children work in teams to complete challenges which are set by real life businesses.

Develop the enterprise and employability skills of all learners who take part.

Contact Paul Robson  
01226 765753  
PaulR@louderthanlifeld.co.uk  
enterprise.louderthanlife.co.uk  
Unit A, Penistone 1.  
Penistone  
S36 6DT



Sheffield Theatres have a shiny new schools newsletter!

Follow the link below to find out more

<http://sheffield-theatres.co.uk/t/3NSM-AOP9-6627MOAND4/cr.aspx>

**Teacher Secondment Opportunity –  
Sheffield Primary Inclusion Centre**

Due to a late resignation we have the opportunity to offer a short term secondment for a primary teacher at the Sheffield Inclusion Centre. Initially, the position is available for a term from January but is likely to be required until summer. The secondment would be an opportunity for a teacher to work in an unique setting and develop new skills in teaching and the support of complex young people.

Based at the Spring Lane site, the Primary Inclusion Centre is a positive learning environment in which young people make significant progress. We also oversee local Bumblebee provision in two centres within the city and work through the Primary Inclusion Panel in preventing permanent exclusion. If interested, all potential candidates and their senior leaders would be more than welcome to visit in advance to learn more about our provision and the requirements of the role.

For more information please contact Andy Ireland, Headteacher

Email—[aireland@inclusion.sheffield.sch.uk](mailto:aireland@inclusion.sheffield.sch.uk)

Phone—0114 2531988

Primary

Door43 is a new Youth Information, Advice & Counselling Service (YIACS) based at Sheffield Futures. They offer holistic emotional wellbeing support for young people aged 13-25 in Sheffield.

Secondary

Door43 would like to invite you to come and meet the team, see the service, and find out more about what Door 43 has to offer! Join them for an informal information session on how we support young people, and how to make referrals or support young people to access our service. This session is aimed at professionals working with young people or young adults.

We currently have 3 dates available:

**30<sup>th</sup> November 2017**

**15<sup>th</sup> February 2018**

**17<sup>th</sup> May 2018**

All sessions are **10.30-11.30** at **Star House, Division Street, Sheffield, S1 4GE**

Please book on using the Eventbrite link - <https://www.eventbrite.co.uk/o/sheffield-futures-15287507673>



# Learn Sheffield Training & Development Hub



## Conference & Events Facilities

Learn Sheffield provides professional conferencing, training and meeting facilities. Our venue offers a range of rooms with flexible layouts that can be tailored to meet your requirements.



ROOMS	Charge		Layout / Capacity			
	Full Day	Half Day	Cabaret	Theatre	Board	Custom
Training Room 1	£175	£100	40	50		Enquire
Training Room 2	£175	£100	30	50		Enquire
Meeting Room	£175	£100	-	-	12	-

To enquire about any of the rooms at Learn Sheffield please contact us via email ([bookings@learnsheffield.co.uk](mailto:bookings@learnsheffield.co.uk)) or phone (0114 250 7417).

The charge for the room includes all the IT facilities, a flipchart and full internet access. There is additional charges for refreshments and lunch if they are required.



## Sheffield Cultural Education Partnership

Primary

Secondary

Special



Communications

## PLEASE COME TO OUR FINAL CONSULTATION EVENT

S-CEP would LOVE your input into the **S-CEP final plans before we launch**. We are meeting from 10:30 - 12:30 on **8th December** at Learn Sheffield, Training and Development Hub, Lees Hall Road, Sheffield, S8 9JP. Please email [Sophie](mailto:Sophie) if you will be attending.

Whether this is the first time you've heard about the S-CEP, only come along to one meeting before, or have come along to lots of the task & finish groups, this meeting is for you. It will be a chance to tell us if the final membership proposals work for you and your organisation, as well as having a chance to input into the ideas and plans for our 2018/19 theme: **Celebrating Sheffield**, and help us decide on the themes for 2020-2022. The results of this planning workshop will feed into the launch conference on 2nd February 2018 at the Crucible.

If this really is the first time you've heard about the S-CEP, you'll find some background information on the [Learn Sheffield](http://www.learnsheffield.co.uk) website.

## Education Visits at Sheffield Cathedral

### What we offer?

At Sheffield Cathedral we offer two different education visits.

All our Education Visits are in line with SACRE.

Education Visits are only available on Mondays or Tuesdays.

Morning sessions commence at 10.00 and afternoon sessions begin at 13.15.

Pupils and staff will need to bring a packed lunch, if staying for the full day.

Please fill in the booking form via the website:

<http://www.sheffieldcathedral.org/school-visits/>

Or email Amy Warrington, Education Admin Officer:

[amy.warrington@sheffield-cathedral.org.uk](mailto:amy.warrington@sheffield-cathedral.org.uk)

0114 263 6063

The Cathedral Church of St Peter and St Paul  
Church Street  
Sheffield  
S1 1HA

Primary

Secondary

**SHEFFIELD CATHEDRAL**  
A PLACE FOR ALL PEOPLE



## Sheffield Smokefree Children & Young People's Service

### Offer to Sheffield Secondary Schools to participate in the ASDAN Certificated 2017 Smokefree Schools Programme

**1 in 5 children start smoking in Sheffield every day**

**16 people die per week in Sheffield Hospitals through smoking related illness & smoking related harm  
costs the local economy over £132 million per year.**

**Our preventative programme aims to minimise the take up of smoking through a whole school  
initiative.**

#### **Who are Zest?**

Zest run a healthy living centre based in Upperthorpe that has been operating since 1998. We also deliver health services, employment support, training and social and physical activities to adults and children across Sheffield. To complement our community work, we also run city wide programmes one of them being the C&YP Smokefree Schools Programme commissioned by The PLACE Public Health Team at Sheffield City Council.

#### **What does the Smokefree Schools Programme offer?**

***Our programme is free and delivered in partnership with schools and built on our experience delivering the programme in selected Sheffield Secondary Schools Since 2014. Following recommissioning, Zest will continue to deliver the Smokefree Schools Programme to 2020.***

We offer a whole school approach to promote smokefree as the norm including staff briefings, policy support, school prevalence evaluations, assemblies, corridor workshops, national campaigns, lessons, ACE days, attendance at events, in house quit support and an ASDAN certificated Peer Support Programme. The programme is delivered over a six month period.

#### **How will the Smokefree Peer Supporter scheme work?**

Young people's participation is integral to the programme. So far, we have trained over 180 students across Sheffield as Smokefree Peer Supporters. The Programme delivers an ASDAN certificated Smokefree Peer Support Programme which includes training aimed at year 8 students to promote non-smoking norms. Trained Peer Supporters promote this message through events in school. Young people have the opportunity to promote their work through Sheffield Youth Council and Sheffield Tobacco Control Board.

#### **How will the Smokefree Schools Programme support smokers to quit?**

A dedicated specialist Young People's Stop Smoking Advisor works on the programme & offers quit support through group and 1-1 sessions including access to nicotine replacement therapy. This service is delivered by our delivery partners at Yorkshire Smokefree and will provide timely support for young people who want to quit smoking.

#### **What are the benefits of engagement in the Smokefree Schools Programme?**

- A consistent school approach to becoming smokefree
- A reduction in smoking prevalence in schools and improvements in students behaviour
- An evidence based peer support programme that is certificated through the ASDAN scheme.
- A social norms marketing campaign
- Specialist Young Persons 1-1 and group support for students to stop smoking with the Yorkshire Smokefree Sheffield Service
- Smokefree support for parents/carers
- A legacy of a smokefree school.

For further information on the Smokefree Schools Programme contact Lou Wright (0114) 2702040 ext 224 or email [louise.wright@zestcommunity.co.uk](mailto:louise.wright@zestcommunity.co.uk)



## How do your students see “the North”?

Primary

Special

Secondary

## Is it a place, a feeling, their family, an attitude?

The Great Exhibition of the North will be the largest event in England in 2018 and aims to show the world how the North of England's art, culture and design is driving the world of tomorrow.

As part of the exhibition, they have organised a photography competition that seeks to capture what the North means to individuals. There is a special category in the contest for schools with prizes available for 2 age groups, under-14s and 14-18 years olds. Each winner will receive a £50 gift voucher while the winning school will receive £500 in art supplies.

Photos need to fit one of four themes:

- Northern Culture
- Landscape and Cityscape
- Art and Design
- My Innovative North

To get your application pack, with rules for how to apply along with lesson plans to introduce the idea to your pupils, visit <https://getnorth2018.com/image-competition-schools-submission/>



[We're delighted to launch the 2017/18 edition of Starting Out](#), the national careers guide for lesbian, gay, bi and trans (LGBT) students, graduates and jobseekers.

The guide features tips for finding an inclusive employer, insights into different sectors and stories of inspirational LGBT role models in the workplace. It also contains listings of Stonewall's Diversity Champions – employers who have committed to making their workplaces more LGBT inclusive. In-depth profiles of all Diversity Champions are available on the [Starting Out website](#).

As a Stonewall Education Champion, your work in supporting schools to tackle homophobia, biphobia and transphobia is vital to ensuring that all students can learn in a safe and welcoming environment. We hope that [Starting Out](#) helps demonstrate to students that employers value diversity and challenge homophobia, biphobia and transphobia. It shows students that the values taught in school reflect those expected of them when they enter the world of work.





# DIMENSIONS

## The Schools Show

Celebrate the Arts, Craft, Design and Technology in Schools  
An exhibition of exceptional work by young people.



Come and join us and be part of DIMENSIONS 2018. An exhibition of exceptional work by school pupils.

If you'd like to find out more please see the [website](#).

or find us on: Facebook [@DimensionsShow](#)

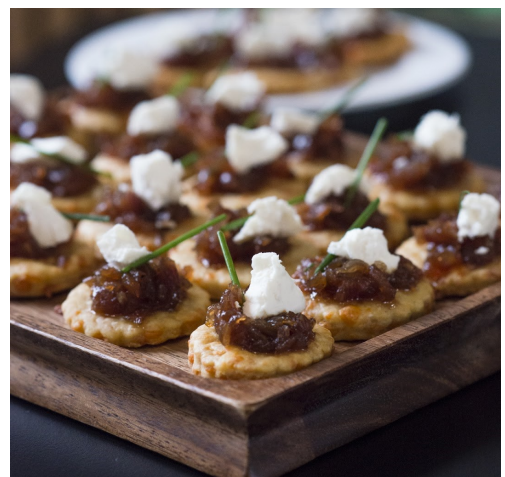
Select your best pieces of Art/Design/Engineering work from KS4 or KS5 to be displayed in the show. We hope eventually to turn this into a festival of all things creative in schools. If you're interested in a chance for a group to perform at the opening event please get in touch.

Please email me, Marie: [m.judge@shu.ac.uk](mailto:m.judge@shu.ac.uk) You can also follow me: Twitter: [@DTEMarie](#)

There is also an opportunity to serve your own canapes at the opening night of the exhibition. Shortlisted entrants get to design and make their canapes in our specialist facilities here at SHU under the supervision of our experts.

Find out more on the website [here](#).

Or for information / to express interest on both the exhibition and the Create a Canape Competition you can sign up to our mailing [list here](#).





## What is Young Healthwatch?

We are a group of volunteers that work with Healthwatch Sheffield to make sure children and young people's views of health and social care services are listened to. We take on different roles and gain valuable experience. Any young person aged 14-25 who lives in the Sheffield area and is interested in volunteering for Healthwatch Sheffield can be part of Young Healthwatch.

Young Healthwatch encourages people from a range of backgrounds to be part of the group and we try our best to make sure that it's accessible for everyone who wants to be involved.



## Get in touch...

Young Healthwatch Sheffield  
 Call: (0114) 253 6688  
 Email: [YHW@healthwatchsheffield.co.uk](mailto:YHW@healthwatchsheffield.co.uk)  
 Address: Healthwatch Sheffield, The Circle, 33 Rockingham Lane, Sheffield, S1 4FW  
 Website:  
[www.healthwatchsheffield.co.uk](http://www.healthwatchsheffield.co.uk)



## Our Aims:




- Listen to the views of children and young people including those who aren't involved in Young Healthwatch, and those from younger age groups
- Create projects and reports which benefit the work Healthwatch Sheffield does
- Make health and social care services friendly and accessible to young people
- Use unique and creative ways to engage and involve young people
- Inform young people about health and social care services
- Include all Young Healthwatch volunteers in some way; we cater to your interests!



**#SpeakUp**  
 to help improve  
 health and care  
 in 2017

**healthwatch**

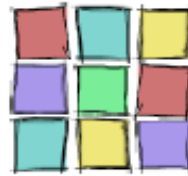


- Are you:
-  Aged 11-18?
  -  Newly arrived in the UK?
  -  Wanting to meet other young people?

Secondary



The RUBIC project is starting



a new **Youth Group** for newly arrived children and young people from the North of Sheffield



<p><b>Who?</b> Young people aged 11-18 who are new to the UK</p>	<p><b>What?</b></p> <ul style="list-style-type: none"> <li>Make friends and support each other</li> <li>Learn new skills and gain confidence</li> <li>Find out things to do in your community</li> <li>Learn from each other and our cultures</li> <li>Have fun!</li> </ul>
<p><b>When?</b> Every Thursday: 4:00pm-6:00pm The first group will take place on Thursday 2nd November</p>	
<p><b>Where?</b> <b>Shirecliffe Community Centre</b> 349 Shirecliffe Road, Sheffield, S5 8XJ</p>	

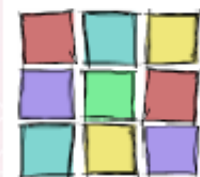
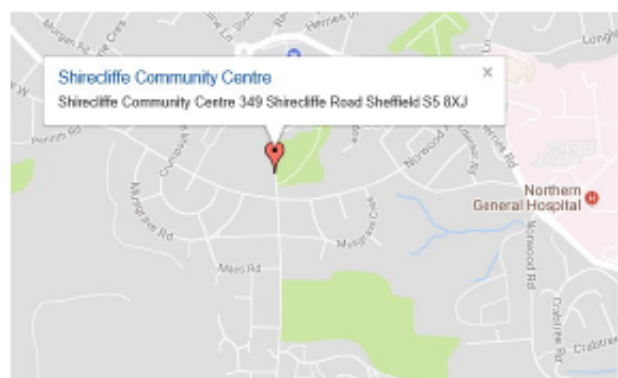
**Contact:**

**Ellie Munday** RUBIC Project Worker

- Tel: 0114 234 8846
- Mob: 07469 660820
- Email: [ellie.munday@chilypep.org.uk](mailto:ellie.munday@chilypep.org.uk)
- Facebook: [facebook.com/RUBICproject](https://facebook.com/RUBICproject)
- Twitter: @RubicProject



**Location:**



Chilypep has started a new project, RUBIC (Respect and Understanding – Building Inclusive Communities). This is a partnership project with MESH (Mediation Sheffield), City of Sanctuary Sheffield, and Who is Your Neighbour and aims to build community



**NSPCC**   
Cruelty to children must stop. **FULL STOP.**



For information or to book any of the above, please contact NSPCC Campaigns Manager, Helen Westerman, [hwesterman@nspcc.org.uk](mailto:hwesterman@nspcc.org.uk) or call 07870 164937.

As part of this year long campaign, we'd like to offer the following free to all primary schools in the city:

- Briefing sessions for staff, using the NSPCC's PANTS resources, to help them talk to KS1 and KS2 children about sexual abuse
- PANTS workshops for parents
- Workshops for parents and/or staff about how to keep children safe online, developed by the NSPCC in partnership with O2 (plus free booklets to disseminate)
- Monthly lunchtime seminars at the NSPCC Service Centre in Sheffield exploring various aspects of child sexual abuse and exploitation for those working with children and families
- PANTS booklets for parents delivered to school
- Share Aware booklets for parents delivered to school
- Campaign posters delivered to school
- Campaign website – [www.itsnotOK-sheffield.org.uk](http://www.itsnotOK-sheffield.org.uk)

Seminar Programme		Date
1	Keeping our children safe online	26 June 2017
2	Working with complex families	19 July 2017
3	Managing harmful sexual behaviour	28 September 2017
4	Supporting the licensing trade around CSA and CSE	16 October 2017
5	Understanding the impact of trauma	22 November 2017
6	Let's talk about CSE	11 December 2017
6	The impact of pornography on children and young people	24 January 2018
8	Understanding the motivations of perpetrators	14 February 2018

All seminars will take place at the NSPCC Service Centre in Sheffield between 11.30-1.30pm (except 28th Sept which is 12-2pm) and are FREE OF CHARGE to attend.  
They will be facilitated by a range of agencies.

To book a place on any of the above, please email Nadia Azim ([nadia.azim@NSPCC.org.uk](mailto:nadia.azim@NSPCC.org.uk)).

Places are limited so early registration is advised.



The Learn Sheffield website now has a 'Commissions & Opportunities' page within the 'Partnership' section. Clicking on the 'Opportunities' tab will take you to these bulletins. Clicking on the 'Commissions' tab will take you to the current and archived commissions – see below...

## Inherited Cities

Secondary

Inherited Cities is a fantastic opportunity for 3 secondary schools and their students. In July 2018, Third Angel and Sheffield Theatres will present Inherited Cities, a performance that explores a vision for the future based on the reality of today. This will be a high profile performance in The Crucible Studio and Sheffield city centre by young people for young people and a truly unique learning opportunity for all involved. Inherited Cities is a Third Angel and Sheffield Theatres collaboration and made possible by funding from Arts Council England. This will enable this opportunity to be FREE to each of the three schools (actual cost £5000)!

*Deadline: 8th December 2017*

## DIMENSIONS 2018

Primary

Special

Secondary

An opportunity to express an interest in taking part in the DIMENSIONS exhibition of Art, Craft, Design and Technology. Receive Teacher Support and possibly future CPD along with access to collaborative networks. Also take part in the 'create a canapé' competition!

*Deadline: 22nd December 2017*

## iMoves

Primary

A commission from imoves, who would like to offer free access to their classroom resources in return for feedback and evaluation of how they support teachers with active teaching to deliver daily structured physical activity

*Deadline: 21st December 2017*

## Primary Physical Literacy

Primary

Move More and Sheffield Hallam University are seeking three primary schools to engage in three physical literacy programmes. This work will support the development of a city wide primary school physical literacy programme. It will be supported by SHU undergraduate projects which are investigating both the application and methods of the physical literacy model. The results from these projects will inform future policy within the Move More initiative.

## Coming Soon— look out for the 'RE Quality Mark' Commission

An opportunity for two schools (one primary and one secondary) to be supported in funding and completing the RE Quality Mark. Sheffield SACRE want to work with two schools to explore the quality mark and feed back to other Sheffield schools.

[http:// www.learnsheffield.co.uk/Commissions/Current-Commissions](http://www.learnsheffield.co.uk/Commissions/Current-Commissions)