

Primary

Secondary

Special

Learn Sheffield Opportunities

May 2017

The purpose of this bulletin is to share opportunities that school leaders may wish to take advantage of. It generally consists of free events, group discounts or local/national initiatives that are being offered to Sheffield. If you know of anything that you think should be included then let us know.

This year the bulletin is aimed at all sectors – look out for the labels above to indicate who the opportunity is most likely to be of interest to!

Primary

Special

Secondary

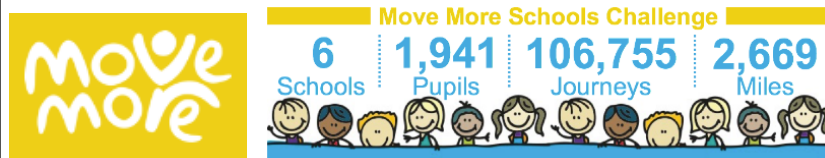
Move More School Yard Challenge 2017

Primary

Move More currently have a commission out to primary schools for the involvement in the Move More Schoolyard Challenge 2017. This will look at implementing a whole school approach to increase physical activity and improve classroom engagement.

The deadline for applications is short and is Friday 5 May 2017 and successful schools will be selected following this date.

Details of the commission are available on <http://www.learnsheffield.co.uk/Commissions/Current-Commissions>



Sheffield School Leaders Briefing

Wednesday 17th May 2017,

8.30-10.00am

Learn Sheffield Training & Development Hub

This is the date for the next planned Sheffield School Leader Briefing. All school leaders are welcome and the agenda for the briefing will be emailed out prior to the meeting.

To book places please email bookings@learnsheffield.co.uk

INTERNATIONAL DAY AGAINST HOMOPHOBIA, TRANSPHOBIA & BIPHOBIA

MAY 17 A Worldwide Celebration of Sexual and Gender Diversities



International Day Against Homophobia, Transphobia & Biphobia

Wednesday 17th May 2017

For further information please visit <http://dayagainsthomophobia.org/idahot-2017-will-focus-on-families/>

Sheffield EAL Conference 2017

Primary

Special

Secondary

'Performance Precedes Competence'

Jim Cummins, Sheffield 2016

Accelerating Progress and English Proficiency for EAL Learners



Thursday 15th June 2017

Sheffield Hallam University

9:00am - 4:00pm

KEY NOTE / SPEAKERS



Bill Bolloten

National and International Specialist in Refugees and Forced Migration

Refugee pupils and belonging in the post-Brexit context



Victoria Murphy

Professor of Applied Linguistics University of Oxford

Recent research in EAL and literacy



Frank Monaghan

Senior Lecturer Applied Linguistics, Open University
Executive member of NALDIC

Latest EAL training film developed for senior leaders, school advisors/inspectors and teachers

Workshops

Dr Mark Payne - Lecturer in Language Education (University of Sheffield) Roma Language and Education Tool (RoLET). Supporting the educational development of Roma Slovak children in Sheffield. (all phases)

Nola Ellen - Refugee Consultant

Supporting the needs of refugee and asylum seeking children, drawing on her experience of working with new arrivals from Calais and other refugee camps. (all phases)

Professor Victoria Murphy - University of Oxford

Reading and the EAL Learner, with a focus on decoding and comprehension. Vocabulary knowledge in learners with EAL. (all phases)

Bill Bolloten - Specialist in Refugees and Forced Migration

British Values, next steps for schools. (all phases)

Kamil Trzebiatowski - EAL Co-ordinator - Hull Secondary School

Developing academic language for all learners at different stages of language acquisition.

Chris Pimm - EALICT Consultant/Writer

ICT and the EAL Learner. (Standard / Enhanced Session). (all phases)

Feverisham College Secondary, Bradford

The use of First Story, a creative writing approach to boost attainment and confidence in writing.

Owlerbrook Primary School, Sheffield

Supporting newly arrived learners to make good progress - pupil case studies.

Lowfield Primary School, Sheffield

Award winning school for the accelerated progress of their EAL learners.

Lilly Croft Primary School, Bradford

Whole school provision supporting EAL learners from F5 to Y6.

Bowling Park Primary School, Bradford - Centre of Excellence

Breaking the glass ceiling on attainment through engaging with local history.

Market Place:

- Books & Resources available
- Poster Presentations
- Multi-cultural bookshop (Bradford)
- Schools Library Service

5 minute presentations on EAL Research & Projects

For conference enquiries please contact Alison Digman 0114 2735494

alison.digman@sheffield.gov.uk

Conference Rates:
£130 per delegate
Early bird discount until 5 May 2017 - £110

To register please [CLICK HERE](#)
or contact the Events Team office on 0114 225 5340

Sheffield
Hallam
University



Third Angel in collaboration with Warp Films is offering FREE Theatre & Film Workshops.

Aged 14-19?

Secondary

Want to find out more about the Theatre and Film industries?

Try your hand at new skills in exciting hands-on workshops where you'll pick up handy careers advice.

FUTURE MAKERS

Apply NOW for FREE workshops:

Tuesday 30 May

Behind the Camera

Wednesday 31 May

How do I become a Director?

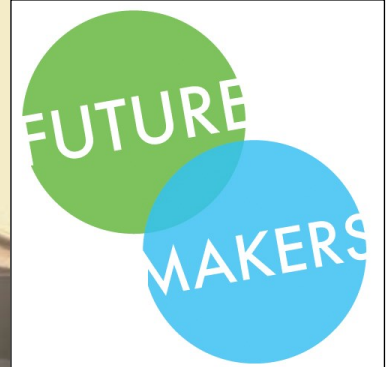
Apply online by zapping the QR code or going to

<http://thirdangel.co.uk/blog/future-makers-in-2017>



Supported using public funding by

**ARTS COUNCIL
ENGLAND**



UNIVERSITY OF
OXFORD

Secondary



MYRIAD

My resilience in adolescence

A research team at the University of Oxford is looking for secondary schools to take part in a national research project called MYRIAD.

MYRIAD is asking questions around how schools prepare young people to manage their emotional health and improve resilience to the challenges of adolescence.

We would like to hear from you if you are a teacher or headteacher at a secondary school that is interested in the question of how to promote emotional health and wellbeing in your pupils.

Participating would enable your school and especially your pupils to gain valuable insight into high-quality scientific research processes and will provide an opportunity for your pupils to see 'research in action'.

myriad@psych.ox.ac.uk | myriadproject.org | 01865 613 164



Transport Survey

Secondary

Please see attached document and Survey Monkey link below to share with your students on your network where possible or to give to student councils to complete if appropriate.

<https://www.surveymonkey.co.uk/r/YPMG2W8>

2,161 young people voted 'transport' as the top issue in **Make your Mark 2016**.

The **Sheffield Youth Cabinet** have the chance to tell

South Yorkshire Travel what the issues are on the **21st of April 2017**.



OUTDOOR LEARNING OPPORTUNITIES FOR SCHOOLS



Sheffield & Rotherham

Primary

Secondary

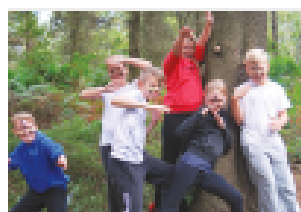
Want to get teaching and learning outside the classroom? Check out these outdoor learning opportunities for primary and secondary schools.

Opportunities for primary schools

Free 'Introduction to Outdoor Learning' workshops
For schools with little experience of outdoor learning.

Primary schools travel bursaries
For schools with little history of outdoor learning to access our full workshop range, which covers science, history, geography and PE.

'Wild PE' travel bursary
For a school (Key Stage 2) to take on our 'Wild PE' challenge at the Greno Woods obstacle course.



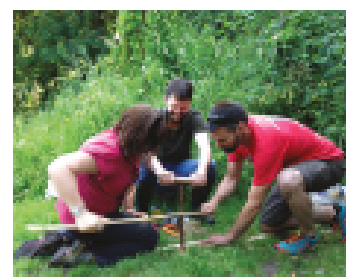
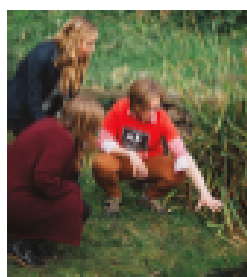
Opportunities for secondary schools

Geography fieldwork travel bursaries
For secondary schools to access geography fieldwork opportunities.

'Wild PE' travel bursary
For a secondary school class to take on our 'Wild PE' challenge at the Greno Woods obstacle course.

Opportunities for educators

Forest School Training
For education professionals and students to access subsidised places on a Forest School Level One course.



Opportunities for transition pupils

Transition Forest School
For 15 Y6 pupils with additional pastoral needs going to the same secondary school.



Want to find out more about outdoor learning?

Why not join our outdoor learning network for the Sheffield area? It's free and open to all education professionals in South Yorkshire. Find out more at wildsheffield.com/teachwildnetwork

Sheffield and Rotherham Wildlife Trust's outdoor learning team is offering a range of discounted and free outdoor learning experiences and training to pupils and teachers in South Yorkshire, from outdoor learning 'taster' workshops to 'Wild PE' lessons, thanks to players of People's Postcode Lottery.



Find out more about how we help schools at wildsheffield.com/schools

Secondary

FESTIVAL OF DEBATE

SYC
SHEFFIELD
YOUTH
CABINET



**SHEFFIELD
TOWN HALL
8TH OF MAY
9:30 - 12:00**

PROGRAMME

9:15	Arrivals and signing in
9:45	Introduction
10:00	Table Top Workshop
10:45	Short Break
11:00	Group Debate Mental Health
11:10	A Curriculum to prepare us for life
11:20	Transport
11:30	Votes at 16
11:40	Plenary
12:00	Finish

For further information and to book places at the Festival of Debate contact
Lee Raven Sheffield Futures
lee.raven@sheffieldfutures.org.uk

Primary

Special

Secondary



NSPCC



Child sexual abuse is NEVER ok

For information about this campaign,
visit www.itsnotok-sheffield.org.uk

For advice and support if you're concerned about a child, please contact:
Sheffield Safeguarding Hub – 0114 273 4855 or NSPCC 24 hour helpline – 0808 800 5000

It's not OK

Primary

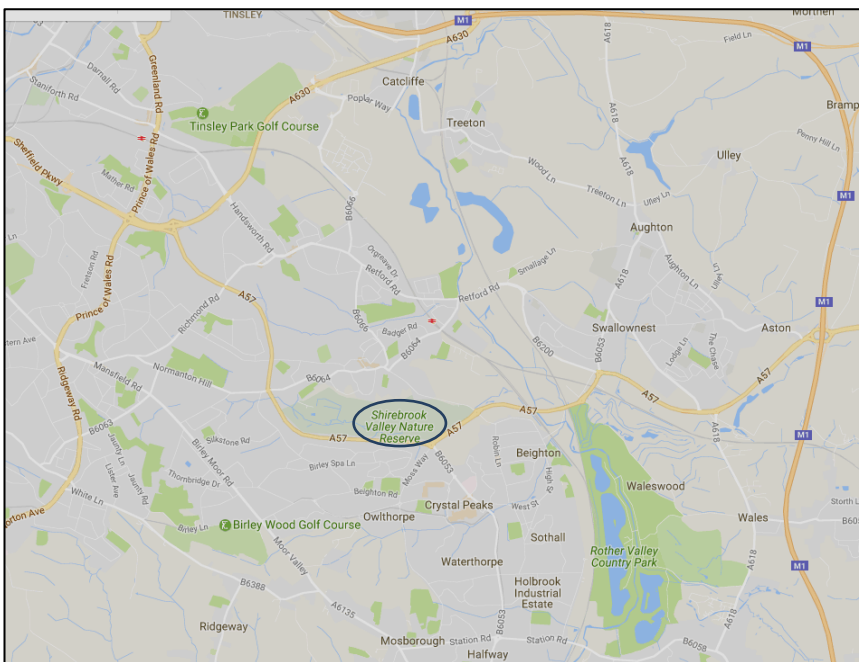
Special

Secondary

Education sessions

at Shire Brook Valley Nature Reserve

Come along to this wonderful nature reserve for a two-hour education session delivered by Sheffield City Council rangers. These sessions are **FREE**, as costs are covered by Natural England.



Free sessions are available on other sites including: Gully's Meadow in Beauchief, 70 Acre Hill in Darnall and Parkwood in Shirecliffe - for more information get in touch.

Possible sessions

include:

Pond dipping

Sweep netting

Habitat studies

Spring /summer walk

Woodland adventure

Wildflower ID

Earth walk

For more information, or to book call Nell on 0114 2356348 or email nell.dixon@sheffield.gov.uk



Sheffield Cultural Education Partnership (S-CEP)

On 22nd September 2017 Learn Sheffield will host a day-long conference to bring together all schools, universities, youth services, arts, culture and heritage organisations in Sheffield.

The conference will have two clear aims:

- ◆ All seven task and finish groups will share their work & findings from the consultation period, March to July 2017.
- ◆ All schools, artists and cultural organisations in Sheffield will be able to input into the S-CEP's on-going plan for the next 24 months, until July 2019.



The S-CEP is developing quickly and all roads lead to the conference that is planned for Friday 22nd September 2017. This conference will reflect on the work of the seven task and finish groups, consider why cultural education is so important and agree our priorities for the next two years.

Look out for the information on how to book a place, which is coming soon.

If you would like to get involved this term then please contact sophie.hunter@capeuk.org to talk about how!

Primary Special Secondary

Sheffield
Cultural
Education
Partnership

Six Months To Build
A Working Partnership
Action Plan: Feb-July 2017

Sheffield Doc Fest 2017 Doc/Crew Volunteer Programme

Primary Special Secondary

Applications are now open for the **2017 Doc/Crew Volunteer Programme!** Roles that are included in the Doc/Crew support all aspects of the Festival, including: Films, Alternate Realities Exhibitions, Talks & Sessions, Marketplace, Events, Marketing and Operations. This opportunity is open to staff in your school

We are really interested in hearing from volunteers who may want to get involved in their community, strengthen their CV and take their first steps in the industry, try something new and develop lasting friendships.

Please find attached a postcard to share with any interested applicants. We ask all applicants to apply online via our website: <https://www.sheffdocfest.com/view/aboutsheffdoccrew>. There you will also find a full list of the types of roles available. **The deadline for applications is the 19th April 2017.**

If you or they have any queries please feel free to contact our Volunteer Coordinator, Serena Williamson on serena.williamson@sidf.co.uk





Yorkshire and Humber Support Peer Network - **Free Event** for schools
bringing member of the SLT and/or governor

Secondary

Progress 8 and SEND:
The challenge of meeting the curriculum needs of young
people with SEND

Friday 9th June 2017: 9.30am – 2.30pm
(Including lunch)

Joseph Rowntree School, Haxby Road, New Earswick, York, YO32 4BZ

Wider outcomes and inclusive practice:

- How are schools including young people with SEND?
- How do we meet Progress 8 requirements and ensure young people take the course appropriate to their needs?
- How can OfSTED and DfE best support schools to reflect wider outcomes for children and young people with SEND?
- How do we include young people with increasingly complex needs?
- What outcomes reflect the best preparation for adulthood?

Inspirational Speakers include:

- Matthew Barnes: HMI National SEND lead
- Association of School and College Leaders
- Gareth Morewood: Director of Curriculum Support at Priestnall School
- Pat Bullen, Preparing for Adulthood regional facilitator
- Plus others to be confirmed

Target audience:

- Head teachers, curriculum leads, governor for SEN, senior leaders and SENCO
- Parent & Carer Forum reps from Y&H region
- LA SEND leads

If you would like to attend please email your name, job title, organisation, dietary needs and access requirements to: samantha.wasilewski@calderdale.gov.uk

ESCAL Sheffield – Reciprocal Reading EEF Trial for Primary Schools 2017/18



Primary

Special

ESCAL has been approached by FFT Literacy to share the Reciprocal Reading Trial opportunity with Sheffield schools.

Please find information below about the Literacy Trial in Reciprocal Reading which the EEF is funding for academic year 2017-18. This trial will include a total of 100 schools.

If you would like to discuss this further, please feel free to contact the ESCAL team for more information on 0114 2053093 or email ESCAL@sheffield.gov.uk. All information for schools is below with further information available online at <https://educationendowmentfoundation.org.uk/our-work/projects/reciprocal-reading/>.

To summarise the Reciprocal Reading trial (2017-18):

All interested schools must be prepared to be randomised to deliver the programme or to act as a control and continue with business as usual for one year, after which they too can deliver the programme.

Eligible schools randomised to deliver the programme must be able to do so with year 4 (whole class), 5 and 6 (targeted) pupils. Intervention schools will pay £500 to receive the intervention (All training and school support) and receive £200 worth of books (this is a fraction of the cost of the programme and takes into account the fact that we are testing the impact of the programme). Year 4, 5, and 6 pupils will complete tests (GL New Group Reading Test).

Control schools will receive £1000 in recognition of completing the GL Assessment New Group Reading Test with their pupils in Y4, 5 and 6 and any other assessments required by the evaluators, and agrees **not** to engage in the programme until the end of the trial.

To be eligible schools must **not** have engaged in Reciprocal Reading training from FFT Literacy in the past.

Schools who take part in this study should not be in the middle of another EEF literacy trial with KS2 pupils.

Other than that, everyone interested is welcome to register, particularly if their FSM level is above average.

Arts Opportunities for teachers, teaching assistants and school technicians at The Hepworth Wakefield

Secondary

Artist Workshops (2 hours £130) from 18 March- 18 June 2017

·Figure & Body workshop with artist Jo Blaker to explore drawing skills while considering the relationship between figure and the body across sculpture, fashion, ceramics and photography as seen in our latest exhibition *Disobedient Bodies: JW Anderson*.

·Explore our latest exhibition *Disobedient Bodies: JW Anderson* with artists Gillian Brent or Laura Slater. Choose from a Drawing or Sculpture focused workshop tailored for your class. Workshops will develop skills in listening, speaking, drawing, 2D 3D as well as learning about great artists.

To book, please visit our website: www.hepworthwakefield.org/learning/teachers/JW-Anderson-schools-offer/

THE
HEPWORTH
WAKEFIELD

When's YOUR CAR FREE day?



Register NOW for 'When's Your Car-Free Day?'

Primary

Special

Secondary

What is it?

'When's Your Car-Free Day' is a primary school campaign to **embed** at least one day of active travel per week into the routine of the school run in Sheffield.

When will it take place?

Mon 5th June - Fri 21st July 2017 *(The last half term of this academic year)*

Why should you take part?

- Participating schools enter a lottery to **win free travel passes for parents/guardians** to travel by bus, train or tram across South Yorkshire
- Children will be invited to enter the '*Car-Free Day Writing Competition*' and the **winning entry will be published in the Sheffield Telegraph**
- Help ALL children to be **physically active**, to start their day refreshed & **ready to learn**
- The campaign involves the whole school community to **make the school run fun!**
- **Reduce congestion, parking problems and air pollution** near your school, making the journey to school cleaner and safer

How do you take part?

To register and receive the campaign materials or for more information, ***please contact us by Monday 15th May:***

Dr Amrita Jesurasa | Public Health Registrar | Sheffield City Council

amritajesurasa@nhs.net | 07866137750 | @amritajesurasa

My car-free day is Tuesday

inmotion!

**move
more**
do something...





The Linking Network

Exploring identity, celebrating diversity, championing equality and promoting community

Primary

Special

Secondary

The Schools Linking Programme in Sheffield aims to bring communities together by linking schools from across the city. We bring together two classes from demographically diverse primary schools creating year-long curriculum rich class links for pupils in Key Stage 2. School Linking has just been endorsed by the Department for Communities and Local Government (DCLG) and the Department for Education (DfE).

The Linking Year

The children will meet three times in the year, usually the first of these meetings is at a neutral venue followed by visits to each school in the spring / summer term. They exchange work throughout the year and through this structured programme explore four key questions:

-**Who am I?** – exploring identity

-**Who are we?** – celebrating diversity

-**Where do we live?** – promoting community

-**How do we all live together?** – championing equality

Benefits to Students

-Develops skills of enquiry, critical thinking, reflection and communication

-Develops trust, empathy, awareness and respect

-Provides opportunities for children and young people to meet, build new relationships, work together and contribute to the wider community.

Benefits to Schools

-Offers a clear and strategic contribution towards the spiritual, moral, social and cultural development of pupils

-Provides a meaningful experience of British values in action as children respect diversity and celebrate individual liberty

- Nationally recognised as offering a positive, age appropriate curriculum response to the Prevent Duty.

Our Involvement

We help you make the initial link and provide you with training and support and all the resources you need to make your linking project an enjoyable process and, above all, a success!

How to join

Community schools, academies, minority faith schools, primary or secondary schools are all welcome. We would love to have you on board. **For more info, please contact Rob Unwin on 0114 241 2754 or rob.unwin@decsy.org.uk.**

Find tried and tested resources on our website to help your teachers deliver excellent SMSC and British values les-

“The linking model can have a positive impact on many aspects of pupil’s skills, attitudes, perceptions and behaviours, particularly their respect for others, their self-confidence and their self-efficacy, as well as broadening the social groups with whom they interact.”

National Foundation for Educational Research (NFER) evaluation of School Linking



Learn Sheffield

Home Communications About Us Strategies Partnerships Services To Schools

Partnerships

Commissions & Opportunities

Strategic Partners

SACRE

Inclusion Documents

Cultural Education P'ship

Equality Documents


Commissions & Opportunities

Learn Sheffield offers a variety of commissions and opportunities to schools. These com

The Learn Sheffield website now has a 'Commissions & Opportunities' page within the 'Partnership' section. Clicking on the 'Opportunities' tab will take you to these bulletins. Clicking on the 'Commissions' tab will take you to the current and archived commissions – see below...

Primary

UnLocke
Learning counterintuitive concepts




An innovative maths and science learning activity!

Informed by neuroscience research

Based on counterintuitive concepts from the primary curriculum

What is UnLocke?
UnLocke is a maths and science computer-based learning activity for school children in Years 3 and 5



Experts from the Centre for Educational Neuroscience in London have been using evidence from neuroscience research to design a computerised learning activity.

As part of an Education Endowment Foundation (EEF) and Wellcome Trust funded research project, we are developing this activity for schools to use as part of their science and maths lessons. Our aim is to find out how much of an impact it has on the academic attainment of pupils.

This research project has full ethical approval from our local ethics committee, following the guidelines of the British Psychological Society.

The UnLocke Project: Main Trial

Learning Counterintuitive Concepts

As part of an Education Endowment Foundation (EEF) and Wellcome Trust funded research project, UnLocke are developing an innovative learning activity to address the learning of counter-intuitive concepts in maths and science. The activity applies evidence from educational neuroscience indicating that in order to learn new concepts children (and adults!) often have to inhibit their intuitive ideas.

UnLocke are looking for Y3 and Y5 classes from 100 state primary schools across the country to take part in this project. We are keen for all schools, regardless of their size and background to take part. UnLocke will run for 10 weeks during the second half of autumn term 2017, and the first half of the spring 2018. Pupils will use UnLocke, which involves age appropriate maths and science material from the national curriculum, 3 times a week, for 15 minutes at the start of maths/science lessons. They will complete this either individually on school computers or through teacher-led interactive whiteboard sessions.

Gender Equality Charter Mark

Secondary

Development Education Centre South Yorkshire (DECSY) are looking for 3 secondary schools to pilot a Gender Equality Charter Mark (GECM) for secondary schools in England developed by a collaborative, EU-funded project with partners in Hungary and Italy.

The aim of the project is to create whole-school change in schools that will impact on young people's expectations of gender roles and challenge gender stereotyping. The GECM will enable a school to measure progress in tackling the effects that gender stereotyping still has on pupils in relation to both subject (and career) choices and as a root cause of sexual harassment and gender-based violence in schools and wider society.

DECSY are looking for schools that have different starting points in engagement with gender issues and have different locations and intakes.

If selected, you will be involved in a three-term trial of the GECM from September 2017 to July 2018.



[http:// www.learnsheffield.co.uk/Commissions/Current-Commissions](http://www.learnsheffield.co.uk/Commissions/Current-Commissions)