

Learn Sheffield Subscription Update: January 2020

This update is intended to ensure that all subscribing schools are aware of all the opportunities that they can take up if they choose to. As always, the intention is that if you don't access any opportunity it is because you have chosen not to rather than not been aware of it.

Universal Offer	Partnership Core Offer	School Improvement Core Offer	Sheffield System Core Offer	Bespoke Menu
Available to all schools – including non-subscribing schools (most elements available only to maintained schools).	Subscribing Schools – delivered through the seven primary locality partnerships (linked by the Primary Improvement Board), the Secondary Partnership & the Special Partnership.	Subscribing Schools have the opportunity to access the elements of the programme below.	Subscribing Schools also have access to the following services, support & opportunities.	Each subscribing school has a 'credit' (£850 primary/ special £1650 secondary) as previously which they can use to 'purchase' from the menu of school improvement services below.
<ul style="list-style-type: none"> • Categorisation • Data Analysis – School/Localities Dashboards • Statutory Entitlements (for maintained schools) <ul style="list-style-type: none"> ◦ Headteacher recruitment ◦ Attendance at Inspection ◦ Safety Net – diagnostic 'support and challenge' meeting ◦ Statutory Moderation • Point of need leadership signposting support • System Co-ordination (opportunities open to schools meeting external criteria)* 	<ul style="list-style-type: none"> • LSIP Partner* • Data Analysis – partnership package* • eLearning & Online Safety - partnership package • Assessment networks • Research Led Sheffield – partnership twilight* • Governance Training – partnership twilight* • Business Support (Secondary Partnership, Special Partnership, Primary Improvement Board & PLP) • Action Plan budget* (including focus on support for key issues and vulnerable schools) 	<ul style="list-style-type: none"> • 2 days of LSIP support (can be used for health check, performance management, etc.) • Data Analysis – School Package (suite of reports) • Ofsted Preparation (additional day) • School Leader Briefings* • Leadership Training Programme • Subject Networks* • Assessment & Moderation Enhanced Programme • Research Led Sheffield programme* • Governance Training Package (including conference & briefings) • School Leader Recruitment support (Headteacher, Principal, etc.) • School Improvement Safety Net* (1-3 days of additional support allocated following categorisation through the Sheffield Gateway) 	<ul style="list-style-type: none"> • System Co-ordination* & Sheffield Identity (including Sheffield Gateway and the Sheffield Priorities Development Programme) • Communication • Point of need leadership support (including crisis, consultancy, advocacy & brokerage) • Crisis Communications Package • Create Sheffield subscription • Annual Subscriber Planning Session 	<ul style="list-style-type: none"> • Additional LSIP or Associate LSIP Days (scoped to the needs of the school) • Bespoke Data Analysis • Bespoke Training (on-site options for leaders, governance, etc.) • Priority Training sessions* – addressing priorities which develop through the year • Multi-Academy Trust packages • Service Discounts* (on other Learn Sheffield and associate Services)
<p>New content is indicated by bold/italics and amendments include a * – more information can be found on the next page.</p>				

- As you will be aware, Learn Sheffield has a new website which contains all of the information about the subscription along with opportunities to book.

Visit <https://www.learnsheffield.co.uk/> - most of the subscription content can be found in the new 'training & events' section (with the remainder in the partnerships section) ...

In collaboration.

[Home](#) [Sign In](#)

School Improvement
Sheffield Priorities
Training & Events
Education Services
Partnerships

Training & Events

- Governance Training
- Governance Briefings & Conference
- Leaders' Briefings & Public Service Forum
- Leadership Training
- Subject Networks
- Primary Assessment & Moderation
- Research Led Sheffield
- Other Training & Conferences
- Event Calendar

This is the Learn Sheffield Governance Training & Development Offer for the 2019-2020 year. It has been developed further by using the feedback from last year and now offers excellent value for money and a comprehensive offer to all schools and as previously, the offer will be delivered by a wide range of quality assured providers amongst others, The National Governance Association (NGA), Teaching Schools of Governance, Universities and Learn Sheffield's own team. We believe it stands the city to the city, and is an excellent example of Sheffield's school led system of...

Subject Networks

Leaders' Briefings & Public Service Forum

- The opportunities in this update are summarised below – each bubble is hyperlinked to the relevant part of the Learn Sheffield website and described in more detail in the pages that follow.



- The subscription also includes a partnership offer (for each primary locality and also for the partnership groups in special and secondary. This offer includes offers relating to Research Led Sheffield and Governance training, in addition to online safety and computing. For information about how this entitlement is being delivered contact please contact Stephen Betts at (Stephen.Betts@learnsheffield.co.uk)

Leaders' Briefings

Spring 2020 –
Thursday 26th March

Summer 2020 –
Friday 26th June

Public Service Forum

The programme includes three termly briefings for school leaders in 2019/20. The new-look briefings are now running twice on the same day to maximise opportunities to attend and are accompanied by the new Public Service Forum.

Leaders' Briefing & Public Service Forum	
8:00	Networking
8:30 - 10:30	Leaders' Briefing (mini-conference)
10:30	Networking
11:00 - 1:00	Public Services Forum
1:00	Networking
1:30 - 3:30	Leaders' Briefing (mini-conference)

This will accompany the Leaders' Briefing. The forum provides an opportunity to share information from other public service partners with school's leaders and provide a forum for discussion.

Leadership Training programme

Governance
Wednesday
22nd January

Financial Benchmarking
Wednesday 29th
January

Tribunals & Legal
Tuesday 4th
February

Leadership Training

The sessions are aimed at new, aspiring and existing leaders. The training is designed to provide induction training for those who are new to school leadership or refresher training for more experienced colleagues.

The programme will grow through the year as additional sessions are identified and added. Some of the upcoming sessions are on the right.

Governance Training

The Governance Training & Development Offer includes a range of courses that can be booked through the Learn Sheffield website. This includes two cohorts of Induction training for new governors and trustees – see below.

Induction Cohort Four –
Saturday 16th May


Governance Briefings

Governance Briefings are regular briefing sessions which are free to all governors and trustees, are designed to keep everyone involved in governance up to speed.

Spring 2020 –
Wednesday 5th February

Summer 2020 –
Wednesday 13th May

Sheffield Governance Conference
Saturday 20th June 2020, 10.00-12.30pm
City Centre Venue TBC




Sheffield Association of Senior Learning Leaders

‘What is the role of governance in high quality outcomes for pupils with SEND?’


A conference to consider the priorities for Governing Bodies and Trust Boards at this pivotal time in education.

What is the role of high quality governance in ensuring that every child receives a world class education?



David Bartram OBE

As a specialist SEND consultant, David has visited and worked with over three hundred schools working collaboratively with London Challenge, the National College and the Department for Education (DfE). He was Director for SEND at the London Leadership Strategy, advisor to the Mayor of London's education team and currently provides support to a range of teaching school alliances and local authorities on the strategic development of SEND provision.



Maria Constantinou

Maria is a Headteacher and inclusion leader at St. Mary's Primary School in East Thoresby, West Yorkshire. Alongside her role at St. Mary's, she has also been a programme lead and consultant for the London Leadership Strategy, a not-profit organisation led by outstanding head teachers across London. She has worked with head teachers and senior leaders on various programmes nationally, providing practical school to school support resulting in rapid change and school improvement. Much of this work has been through programmes to further develop practice and approaches to SEND. Maria has also worked in an advisory role for the Department of Education to inform National Professional Qualifications for School Leadership and Career Progression for Teachers, and is currently a panel member supporting the development of an evidence based SEND Institute Report on behalf of the Education Endowment Foundation.

Conference Programme	
9.00am	Registration & Refreshments
10.00am	Opening Remarks
10.10am	Keynote 1 – David Bartram
11.10am	Break
11.15am	Keynote 2 – Maria Constantinou
12.15pm	Panel Q&A
12.30pm	Close

Booking Information

To book your place at the conference please use the 'Book Now' button where tickets can be reserved.

Governance Training Subscriber Schools- TWD free places
Non Subscriber School & General Sale - £150 per place

Refreshments are included as part of the conference ticket

[Book Now](#)

Web: www.learnsheffield.co.uk

Tel: 0114 2507417

Email: governance@learnsheffield.co.uk

Saturday 20th June 2020

Governance Conference

The purpose of the annual Governance Conference is to inspire and motivate governors to reflect on their own schools and the wider educational community. Each subscribing school receives two tickets for the conference. The theme for this year's conference is SEND and the key note speakers are David Bartram and Maria Constantinou.

Research Led Sheffield Programme

This is the third year of the Research Led Sheffield Programme which is a collaboration between Learn Sheffield and Huntington Research School. This year the partnership has been joined by the Sheffield Associate Research School which is based at Notre Dame Secondary School and working closely with Huntington to continue to build local capacity.

Central Twilights

Secondary Literacy

Wednesday 22nd January

Behaviour

Wednesday 26th February

Early Maths

Monday 20th April

Effective Feedback

Monday 6th July

SEND - tbc

Partnership Twilights

Visit the [Learn Sheffield website](#) to book on these twilights – which have been chosen by each Primary locality, the Secondary Partnership and the Special & IR Partnership.

Pupil Premium Training Programme

This [programme](#) will use the EEF's guide to the Pupil Premium at its core and will build on the recently updated guidance from the DfE. It is a three session programme (costing £295) which uses evidence to make a difference for disadvantaged pupils.

Curriculum Training Programme

This [programme](#) will explore the best available evidence around teaching and learning that supports a cohesive curriculum. It is a three session programme (costing £295) which uses evidence to support curriculum development.

Subject Networks

Subject Networks

More than thirty subject networks are available and can be booked online. The meeting weeks below are used as widely as possible to enable schools and academies to use the networks as part of their CPD programme.

Spring – w/c 16 March
Summer – w/c 22 June



Eat Smart Sheffield Briefings & Conference

Briefing

Thursday 6th February

Conference

Save the date –
Thursday 21st May

More information

[Introductory Flyer /](#)
[Autumn Newsletter](#)



Inclusion Task Force Training & Conferences

Training Programme

Includes the core training offer, SENCO briefings and conferences for school leaders, SENCOs and governors.

Improvement Programme

Information about the improvement programme for the city can be found here.

Guidance & Resources



SACRE Training & Conference

Information about a new [SACRE training programme](#) will be published on the website shortly.

Primary Assessment and Moderation Programme

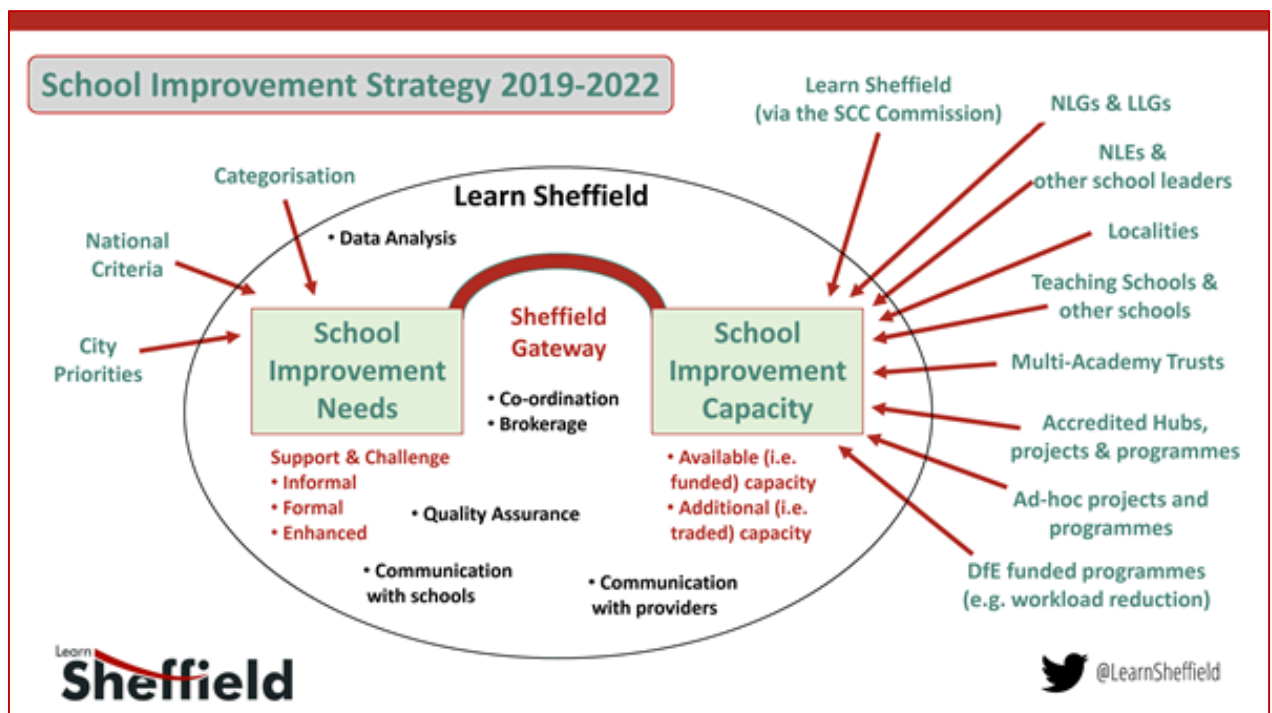
The majority of this programme takes place in the autumn term but the Phonics Screening Check briefings (for teachers new to Y1) are coming up in May.

Phonics Screening Check Briefing

Wednesday 20th May / Thursday 21st May

Additional Information

- Additional opportunities will be available later in the spring and the summer terms. These will provide additional opportunities for colleagues to use remaining bespoke credit or support days on additional training opportunities, including Ofsted preparation.
- This guide has not focused on the days of support that schools receive as these will have been agreed through the earlier deployment meetings (if they related to health check days, Ofsted preparation days or days converted from bespoke credit).
- The other source of additional days are the safety net days which follow categorisation and provide extra support to subscribing schools or academies who have been categorised as yellow, amber or red. These days are being allocated through discussion with schools and academies directly following the new school improvement gateway (below) which is part of our new School Improvement Strategy.



If you have any questions about support days or any other aspects of the subscription please contact Stephen Betts at (Stephen.Betts@learnsheffield.co.uk)

Information about the 2020/21 Subscription Offer will be available by April 2020 ahead of the opt-out deadline of May 31st 2020.